

Precision Stainless, Inc.

MADE
IN
USA

STANDARD AND CUSTOM STAINLESS STEEL TUBE FITTINGS

BPE FITTINGS

CONTENTS



Bevel Seat Fittings



BPE Fittings



Clamp Fittings



I-Line Fittings



John Perry Fittings



Sanitary Butt weld Fittings

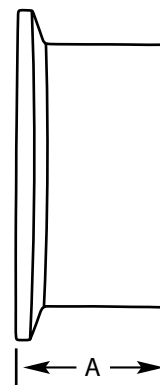


Tube O.D. Fittings

14AM7-BPE

Automatic Weld Ferrule

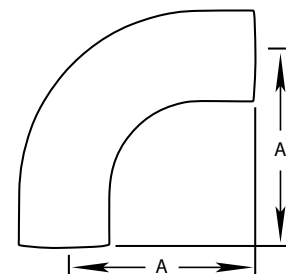
Size	A	Surface Finish	316L Item Number
.5 in 12.7 mm	1.75 in 44.5 mm	20ID/32OD	S14AM-BPE-0050-PL-6
.75 in 19.0 mm	1.75 in 44.5 mm	20ID/32OD	S14AM-BPE-0075-PL-6
1 in 25.4 mm	1.75 in 44.5 mm	20ID/32OD	S14AM-BPE-0100-PL-6
1.5 in 38.1 mm	1.75 in 44.5 mm	20ID/32OD	S14AM-BPE-0150-PL-6
2 in 50.8 mm	2.250 in 57.2 mm	20ID/32OD	S14AM-BPE-0200-PL-6
2.5 in 63.5 mm	2.250 in 57.2 mm	20ID/32OD	S14AM-BPE-0250-PL-6
3 in 76.2 mm	2.250 in 57.2 mm	20ID/32OD	S14AM-BPE-0300-PL-6
4 in 101.6 mm	2.250 in 57.2 mm	20ID/32OD	S14AM-BPE-0400-PL-6
6 in 152.4 mm	3.00 in 76.2 mm	20ID/32OD	S14AM-BPE-0600-PL-6



2S-BPE

90° Buttweld Elbow

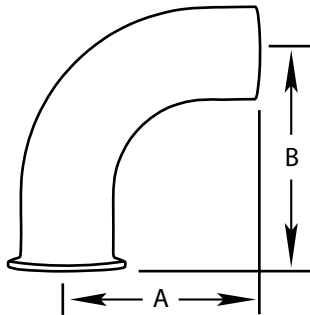
Size	A	Surface Finish	316L Item Number
.5 in 12.7 mm	3.00 in 76.2 mm	20ID/UNPOL OD	2S-BPE-0050-PC-6
.5 in 12.7 mm	3.00 in 76.2 mm	20ID/32OD	2S-BPE-0050-PL-6
.75 in 19.0 mm	3.00 in 76.2 mm	20ID/UNPOL OD	2S-BPE-0075-PC-6
.75 in 19.0 mm	3.00 in 76.2 mm	20ID/32OD	2S-BPE-0075-PL-6
1 in 25.4 mm	3.00 in 76.2 mm	20ID/UNPOL OD	2S-BPE-0100-PC-6
1 in 25.4 mm	3.00 in 76.2 mm	20ID/32OD	2S-BPE-0100-PL-6
1.5 in 38.1 mm	3.75 in 95.3 mm	20ID/UNPOL OD	2S-BPE-0150-PC-6
1.5 in 38.1 mm	3.75 in 95.3 mm	20ID/32OD	2S-BPE-0150-PL-6
2 in 50.8 mm	4.750 in 120.7 mm	20ID/UNPOL OD	2S-BPE-0200-PC-6
2 in 50.8 mm	4.750 in 120.7 mm	20ID/32OD	2S-BPE-0200-PL-6
2.5 in 63.5 mm	5.50 in 139.7 mm	20ID/UNPOL OD	2S-BPE-0250-PC-6
2.5 in 63.5 mm	5.50 in 139.7 mm	20ID/32OD	2S-BPE-0250-PL-6
3 in 76.2 mm	6.25 in 158.8 mm	20ID/UNPOL OD	2S-BPE-0300-PC-6
3 in 76.2 mm	6.25 in 158.8 mm	20ID/32OD	2S-BPE-0300-PL-6
4 in 101.6 mm	8.00 in 203.2 mm	20ID/UNPOL OD	2S-BPE-0400-PC-6
4 in 101.6 mm	8.00 in 203.2 mm	20ID/32OD	2S-BPE-0400-PL-6
6 in 152.4 mm	11.50 in 292.1 mm	20ID/UNPOL OD	2S-BPE-0600-PC-6
6 in 152.4 mm	11.50 in 292.1 mm	20ID/32OD	2S-BPE-0600-PL-6



2CM-BPE

Clamp x Weld 90° Elbow

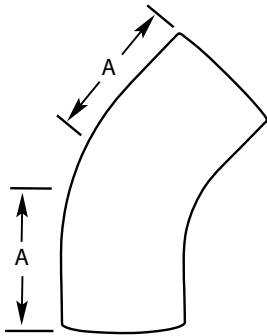
Size	A	B	Surface Finish	316L Item Number
.5 in 12.7 mm	3.00 in 76.2 mm	1.625 in 41.3 mm	20ID/UNPOL OD	2CM-BPE-0050-PC-6
.5 in 12.7 mm	3.00 in 76.2 mm	1.625 in 41.3 mm	20ID/32OD	2CM-BPE-0050-PL-6
.75 in 19.0 mm	3.00 in 76.2 mm	1.625 in 41.3 mm	20ID/UNPOL OD	2CM-BPE-0075-PC-6
.75 in 19.0 mm	3.00 in 76.2 mm	1.625 in 41.3 mm	20ID/32OD	2CM-BPE-0075-PL-6
1 in 25.4 mm	3.00 in 76.2 mm	2.00 in 50.8 mm	20ID/UNPOL OD	2CM-BPE-0100-PC-6
1 in 25.4 mm	3.00 in 76.2 mm	2.00 in 50.8 mm	20ID/32OD	2CM-BPE-0100-PL-6
1.5 in 38.1 mm	3.75 in 95.3 mm	2.75 in 69.9 mm	20ID/UNPOL OD	2CM-BPE-0150-PC-6
1.5 in 38.1 mm	3.75 in 95.3 mm	2.75 in 69.9 mm	20ID/32OD	2CM-BPE-0150-PL-6
2 in 50.8 mm	4.750 in 120.7 mm	3.50 in 88.9 mm	20ID/UNPOL OD	2CM-BPE-0200-PC-6
2 in 50.8 mm	4.750 in 120.7 mm	3.50 in 88.9 mm	20ID/32OD	2CM-BPE-0200-PL-6
2.5 in 63.5 mm	5.50 in 139.7 mm	4.25 in 108.0 mm	20ID/UNPOL OD	2CM-BPE-0250-PC-6
2.5 in 63.5 mm	5.50 in 139.7 mm	4.25 in 108.0 mm	20ID/32OD	2CM-BPE-0250-PL-6
3 in 76.2 mm	6.25 in 158.8 mm	5.00 in 127.0 mm	20ID/UNPOL OD	2CM-BPE-0300-PC-6
3 in 76.2 mm	6.25 in 158.8 mm	5.00 in 127.0 mm	20ID/32OD	2CM-BPE-0300-PL-6
4 in 101.6 mm	8.00 in 203.2 mm	6.625 in 168.3 mm	20ID/UNPOL OD	2CM-BPE-0400-PC-6
4 in 101.6 mm	8.00 in 203.2 mm	6.625 in 168.3 mm	20ID/32OD	2CM-BPE-0400-PL-6
6 in 152.4 mm	11.50 in 292.1 mm	10.50 in 266.7 mm	20ID/UNPOL OD	2CM-BPE-0600-PC-6
6 in 152.4 mm	11.50 in 292.1 mm	10.50 in 266.7 mm	20ID/32OD	2CM-BPE-0600-PL-6



2KS-BPE

Buttweld 45° Elbow

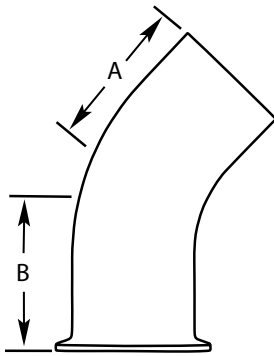
Size	A	Surface Finish	316L Item Number
.5 in 12.7 mm	2.250 in 57.2 mm	20ID/UNPOL OD	2KS-BPE-0050-PC-6
.5 in 12.7 mm	2.250 in 57.2 mm	20ID/32OD	2KS-BPE-0050-PL-6
.75 in 19.0 mm	2.250 in 57.2 mm	20ID/UNPOL OD	2KS-BPE-0075-PC-6
.75 in 19.0 mm	2.250 in 57.2 mm	20ID/32OD	2KS-BPE-0075-PL-6
1 in 25.4 mm	2.250 in 57.2 mm	20ID/UNPOL OD	2KS-BPE-0100-PC-6
1 in 25.4 mm	2.250 in 57.2 mm	20ID/32OD	2KS-BPE-0100-PL-6
1.5 in 38.1 mm	2.50 in 63.5 mm	20ID/UNPOL OD	2KS-BPE-0150-PC-6
1.5 in 38.1 mm	2.50 in 63.5 mm	20ID/32OD	2KS-BPE-0150-PL-6
2 in 50.8 mm	3.00 in 76.2 mm	20ID/UNPOL OD	2KS-BPE-0200-PC-6
2 in 50.8 mm	3.00 in 76.2 mm	20ID/32OD	2KS-BPE-0200-PL-6
2.5 in 63.5 mm	3.375 in 85.7 mm	20ID/UNPOL OD	2KS-BPE-0250-PC-6
2.5 in 63.5 mm	3.375 in 85.7 mm	20ID/32OD	2KS-BPE-0250-PL-6
3 in 76.2 mm	3.625 in 92.1 mm	20ID/UNPOL OD	2KS-BPE-0300-PC-6
3 in 76.2 mm	3.625 in 92.1 mm	20ID/32OD	2KS-BPE-0300-PL-6
4 in 101.6 mm	4.50 in 114.3 mm	20ID/UNPOL OD	2KS-BPE-0400-PC-6
4 in 101.6 mm	4.50 in 114.3 mm	20ID/32OD	2KS-BPE-0400-PL-6
6 in 152.4 mm	6.25 in 158.8 mm	20ID/UNPOL OD	2KS-BPE-0600-PC-6
6 in 152.4 mm	6.25 in 158.8 mm	20ID/32OD	2KS-BPE-0600-PL-6



2KM-BPE

Clamp x Weld 45° Elbow

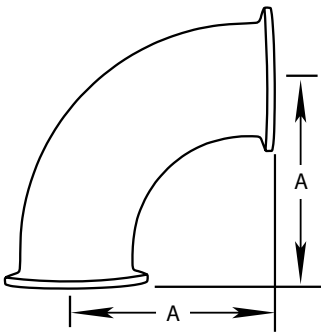
Size	A	B	Surface Finish	316L Item Number
.5 in 12.7 mm	2.250 in 57.2 mm	1.00 in 25.4 mm	20ID/UNPOL OD	2KM-BPE-0050-PC-6
.5 in 12.7 mm	2.250 in 57.2 mm	1.00 in 25.4 mm	20ID/32OD	2KM-BPE-0050-PL-6
.75 in 19.0 mm	2.250 in 57.2 mm	1.00 in 25.4 mm	20ID/UNPOL OD	2KM-BPE-0075-PC-6
.75 in 19.0 mm	2.250 in 57.2 mm	1.00 in 25.4 mm	20ID/32OD	2KM-BPE-0075-PL-6
1 in 25.4 mm	2.250 in 57.2 mm	1.125 in 28.6 mm	20ID/UNPOL OD	2KM-BPE-0100-PC-6
1 in 25.4 mm	2.250 in 57.2 mm	1.125 in 28.6 mm	20ID/32OD	2KM-BPE-0100-PL-6
1.5 in 38.1 mm	2.50 in 63.5 mm	1.438 in 36.5 mm	20ID/UNPOL OD	2KM-BPE-0150-PC-6
1.5 in 38.1 mm	2.50 in 63.5 mm	1.438 in 36.5 mm	20ID/32OD	2KM-BPE-0150-PL-6
2 in 50.8 mm	3.00 in 76.2 mm	1.750 in 44.5 mm	20ID/UNPOL OD	2KM-BPE-0200-PC-6
2 in 50.8 mm	3.00 in 76.2 mm	1.750 in 44.5 mm	20ID/32OD	2KM-BPE-0200-PL-6
2.5 in 63.5 mm	3.375 in 85.7 mm	2.063 in 52.4 mm	20ID/UNPOL OD	2KM-BPE-0250-PC-6
2.5 in 63.5 mm	3.375 in 85.7 mm	2.063 in 52.4 mm	20ID/32OD	2KM-BPE-0250-PL-6
3 in 76.2 mm	3.625 in 92.1 mm	2.375 in 60.3 mm	20ID/UNPOL OD	2KM-BPE-0300-PC-6
3 in 76.2 mm	3.625 in 92.1 mm	2.375 in 60.3 mm	20ID/32OD	2KM-BPE-0300-PL-6
4 in 101.6 mm	4.50 in 114.3 mm	3.125 in 79.4 mm	20ID/UNPOL OD	2KM-BPE-0400-PC-6
4 in 101.6 mm	4.50 in 114.3 mm	3.125 in 79.4 mm	20ID/32OD	2KM-BPE-0400-PL-6



2CMP-BPE

90° Clamp Elbow

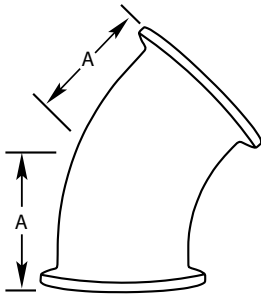
Size	A	Surface Finish	316L Item Number
.5 in 12.7 mm	1.625 in 41.3 mm	20ID/UNPOL OD	2CMP-BPE-0050-PC-6
.5 in 12.7 mm	1.625 in 41.3 mm	20ID/32OD	2CMP-BPE-0050-PL-6
.75 in 19.0 mm	1.625 in 41.3 mm	20ID/UNPOL OD	2CMP-BPE-0075-PC-6
.75 in 19.0 mm	1.625 in 41.3 mm	20ID/32OD	2CMP-BPE-0075-PL-6
1 in 25.4 mm	2.00 in 50.8 mm	20ID/UNPOL OD	2CMP-BPE-0100-PC-6
1 in 25.4 mm	2.00 in 50.8 mm	20ID/32OD	2CMP-BPE-0100-PL-6
1.5 in 38.1 mm	2.75 in 69.9 mm	20ID/UNPOL OD	2CMP-BPE-0150-PC-6
1.5 in 38.1 mm	2.75 in 69.9 mm	20ID/32OD	2CMP-BPE-0150-PL-6
2 in 50.8 mm	3.50 in 88.9 mm	20ID/UNPOL OD	2CMP-BPE-0200-PC-6
2 in 50.8 mm	3.50 in 88.9 mm	20ID/32OD	2CMP-BPE-0200-PL-6
2.5 in 63.5 mm	4.25 in 108.0 mm	20ID/UNPOL OD	2CMP-BPE-0250-PC-6
2.5 in 63.5 mm	4.25 in 108.0 mm	20ID/32OD	2CMP-BPE-0250-PL-6
3 in 76.2 mm	5.00 in 127.0 mm	20ID/UNPOL OD	2CMP-BPE-0300-PC-6
3 in 76.2 mm	5.00 in 127.0 mm	20ID/32OD	2CMP-BPE-0300-PL-6
4 in 101.6 mm	6.625 in 168.3 mm	20ID/UNPOL OD	2CMP-BPE-0400-PC-6
4 in 101.6 mm	6.625 in 168.3 mm	20ID/32OD	2CMP-BPE-0400-PL-6
6 in 152.4 mm	10.50 in 266.7 mm	20ID/UNPOL OD	2CMP-BPE-0600-PC-6
6 in 152.4 mm	10.50 in 266.7 mm	20ID/32OD	2CMP-BPE-0600-PL-6



2KMP-BPE

45° Clamp Elbow

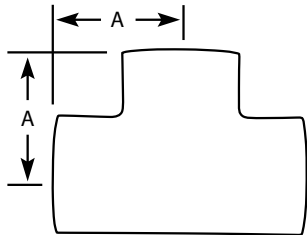
Size	A	Surface Finish	316L Item Number
.5 in 12.7 mm	1.00 in 25.4 mm	20ID/UNPOL OD	2KMP-BPE-0050-PC-6
.5 in 12.7 mm	1.00 in 25.4 mm	20ID/32OD	2KMP-BPE-0050-PL-6
.75 in 19.0 mm	1.00 in 25.4 mm	20ID/UNPOL OD	2KMP-BPE-0075-PC-6
.75 in 19.0 mm	1.00 in 25.4 mm	20ID/32OD	2KMP-BPE-0075-PL-6
1 in 25.4 mm	1.125 in 28.6 mm	20ID/UNPOL OD	2KMP-BPE-0100-PC-6
1 in 25.4 mm	1.125 in 28.6 mm	20ID/32OD	2KMP-BPE-0100-PL-6
1.5 in 38.1 mm	1.438 in 36.5 mm	20ID/UNPOL OD	2KMP-BPE-0150-PC-6
1.5 in 38.1 mm	1.438 in 36.5 mm	20ID/32OD	2KMP-BPE-0150-PL-6
2 in 50.8 mm	1.75 in 44.5 mm	20ID/UNPOL OD	2KMP-BPE-0200-PC-6
2 in 50.8 mm	1.75 in 44.5 mm	20ID/32OD	2KMP-BPE-0200-PL-6
2.5 in 63.5 mm	2.063 in 52.4 mm	20ID/UNPOL OD	2KMP-BPE-0250-PC-6
2.5 in 63.5 mm	2.063 in 52.4 mm	20ID/32OD	2KMP-BPE-0250-PL-6
3 in 76.2 mm	2.375 in 60.3 mm	20ID/UNPOL OD	2KMP-BPE-0300-PC-6
3 in 76.2 mm	2.375 in 60.3 mm	20ID/32OD	2KMP-BPE-0300-PL-6
4 in 101.6 mm	3.125 in 79.4 mm	20ID/UNPOL OD	2KMP-BPE-0400-PC-6
4 in 101.6 mm	3.125 in 79.4 mm	20ID/32OD	2KMP-BPE-0400-PL-6
6 in 152.4 mm	5.25 in 133.4 mm	20ID/UNPOL OD	2KMP-BPE-0600-PC-6
6 in 152.4 mm	5.25 in 133.4 mm	20ID/32OD	2KMP-BPE-0600-PL-6



7WWW-BPE

Buttweld Equal Tee

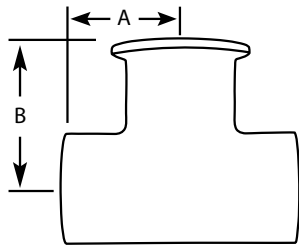
Size	A	Surface Finish	316L Item Number
.5 in 12.7 mm	1.875 in 47.6 mm	20ID/UNPOL OD	7WWW-BPE-0050-PC-6
.5 in 12.7 mm	1.875 in 47.6 mm	20ID/32OD	7WWW-BPE-0050-PL-6
.75 in 19.0 mm	2.00 in 50.8 mm	20ID/UNPOL OD	7WWW-BPE-0075-PC-6
.75 in 19.0 mm	2.00 in 50.8 mm	20ID/32OD	7WWW-BPE-0075-PL-6
1 in 25.4 mm	2.125 in 54.0 mm	20ID/UNPOL OD	7WWW-BPE-0100-PC-6
1 in 25.4 mm	2.125 in 54.0 mm	20ID/32OD	7WWW-BPE-0100-PL-6
1.5 in 38.1 mm	2.375 in 60.3 mm	20ID/UNPOL OD	7WWW-BPE-0150-PC-6
1.5 in 38.1 mm	2.375 in 60.3 mm	20ID/32OD	7WWW-BPE-0150-PL-6
2 in 50.8 mm	2.875 in 73.0 mm	20ID/UNPOL OD	7WWW-BPE-0200-PC-6
2 in 50.8 mm	2.875 in 73.0 mm	20ID/32OD	7WWW-BPE-0200-PL-6
2.5 in 63.5 mm	3.125 in 79.4 mm	20ID/UNPOL OD	7WWW-BPE-0250-PC-6
2.5 in 63.5 mm	3.125 in 79.4 mm	20ID/32OD	7WWW-BPE-0250-PL-6
3 in 76.2 mm	3.375 in 85.7 mm	20ID/UNPOL OD	7WWW-BPE-0300-PC-6
3 in 76.2 mm	3.375 in 85.7 mm	20ID/32OD	7WWW-BPE-0300-PL-6
4 in 101.6 mm	4.125 in 104.8 mm	20ID/UNPOL OD	7WWW-BPE-0400-PC-6
4 in 101.6 mm	4.125 in 104.8 mm	20ID/32OD	7WWW-BPE-0400-PL-6
6 in 152.4 mm	5.625 in 142.9 mm	20ID/UNPOL OD	7WWW-BPE-0600-PC-6
6 in 152.4 mm	5.625 in 142.9 mm	20ID/32OD	7WWW-BPE-0600-PL-6



7WWM-BPE

Weld x Weld x Clamp Branch Tees

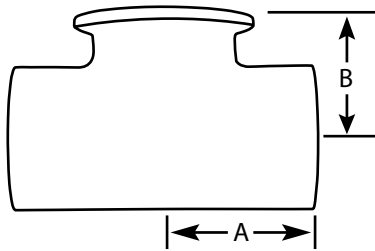
Size	A	B	Surface Finish	316L Item Number
.5 in 12.7 mm	1.875 in 47.6 mm	2.25 in 57.2 mm	20ID/UNPOL OD	7WWM-BPE-0050-PC-6
.5 in 12.7 mm	1.875 in 47.6 mm	2.25 in 57.2 mm	20ID/32OD	7WWM-BPE-0050-PL-6
.75 in 19.0 mm	2.00 in 50.8 mm	2.375 in 60.3 mm	20ID/UNPOL OD	7WWM-BPE-0075-PC-6
.75 in 19.0 mm	2.00 in 50.8 mm	2.375 in 60.3 mm	20ID/32OD	7WWM-BPE-0075-PL-6
1 in 25.4 mm	2.125 in 54.0 mm	2.625 in 66.7 mm	20ID/UNPOL OD	7WWM-BPE-0100-PC-6
1 in 25.4 mm	2.125 in 54.0 mm	2.625 in 66.7mm	20ID/32OD	7WWM-BPE-0100-PL-6
1.5 in 38.1 mm	2.375 in 60.3 mm	2.875 in 73.0 mm	20ID/UNPOL OD	7WWM-BPE-0150-PC-6
1.5 in 38.1 mm	2.375 in 60.3 mm	2.875 in 73.0 mm	20ID/32OD	7WWM-BPE-0150-PL-6
2 in 50.8 mm	2.875 in 73.0 mm	3.375 in 85.7 mm	20ID/UNPOL OD	7WWM-BPE-0200-PC-6
2 in 50.8 mm	2.875 in 73.0 mm	3.375 in 85.7 mm	20ID/32OD	7WWM-BPE-0200-PL-6
2.5 in 63.5 mm	3.125 in 79.4 mm	3.625 in 92.1 mm	20ID/UNPOL OD	7WWM-BPE-0250-PC-6
2.5 in 63.5 mm	3.125 in 79.4 mm	3.625 in 92.1 mm	20ID/32OD	7WWM-BPE-0250-PL-6
3 in 76.2 mm	3.375 in 85.7 mm	3.875 in 98.4 mm	20ID/UNPOL OD	7WWM-BPE-0300-PC-6
3 in 76.2 mm	3.375 in 85.7 mm	3.875 in 98.4 mm	20ID/32OD	7WWM-BPE-0300-PL-6
4 in 101.6 mm	4.125 in 104.8 mm	4.75 in 120.7 mm	20ID/UNPOL OD	7WWM-BPE-0400-PC-6
4 in 101.6 mm	4.125 in 104.8 mm	4.75 in 120.7 mm	20ID/32OD	7WWM-BPE-0400-PL-6



7WWM-S-BPE

Weld x Weld x Short Clamp Branch Tee

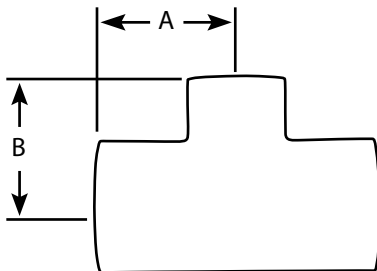
Size	A	B	Surface Finish	316L Item Number
.5 in 12.7 mm	1.875 in 47.6 mm	1.00 in 25.4 mm	20ID/UNPOL OD	7WWM-S-BPE-0050-PC-6
.5 in 12.7 mm	1.875 in 47.6 mm	1.00 in 25.4 mm	20ID/32OD	7WWM-S-BPE-0050-PL-6
.75 in 19.0 mm	2.00 in 50.8 mm	1.125 in 28.6 mm	20ID/UNPOL OD	7WWM-S-BPE-0075-PC-6
.75 in 19.0 mm	2.00 in 50.8 mm	1.125 in 28.6 mm	20ID/32OD	7WWM-S-BPE-0075-PL-6
1 in 25.4 mm	2.125 in 54.0 mm	1.125 in 28.6 mm	20ID/UNPOL OD	7WWM-S-BPE-0100-PC-6
1 in 25.4 mm	2.125 in 54.0 mm	1.125 in 28.6 mm	20ID/32OD	7WWM-S-BPE-0100-PL-6
1.5 in 38.1 mm	2.375 in 60.3 mm	1.375 in 34.9 mm	20ID/UNPOL OD	7WWM-S-BPE-0150-PC-6
1.5 in 38.1 mm	2.375 in 60.3 mm	1.375 in 34.9 mm	20ID/32OD	7WWM-S-BPE-0150-PL-6
2 in 50.8 mm	2.875 in 73.0 mm	1.625 in 41.3 mm	20ID/UNPOL OD	7WWM-S-BPE-0200-PC-6
2 in 50.8 mm	2.875 in 73.0 mm	1.625 in 41.3 mm	20ID/32OD	7WWM-S-BPE-0200-PL-6
2.5 in 63.5 mm	3.125 in 79.4 mm	1.875 in 47.6 mm	20ID/UNPOL OD	7WWM-S-BPE-0250-PC-6
2.5 in 63.5 mm	3.125 in 79.4 mm	1.875 in 47.6 mm	20ID/32OD	7WWM-S-BPE-0250-PL-6
3 in 76.2 mm	2.375 in 85.7 mm	2.125 in 54.0 mm	20ID/UNPOL OD	7WWM-S-BPE-0300-PC-6
3 in 76.2 mm	2.375 in 85.7 mm	2.125 in 54.0 mm	20ID/32OD	7WWM-S-BPE-0300-PL-6
4 in 101.6 mm	4.125 in 104.8 mm	2.75 in 69.9 mm	20ID/UNPOL OD	7WWM-S-BPE-0400-PC-6
4 in 101.6 mm	4.125 in 104.8 mm	2.75 in 69.9 mm	20ID/32OD	7WWM-S-BPE-0400-PL-6
6 in 152.4 mm	5.625 in 142.9 mm	4.625 in 95.3 mm	20ID/UNPOL OD	7WWM-S-BPE-0600-PC-6
6 in 152.4 mm	5.625 in 142.9 mm	4.625 in 95.3 mm	20ID/32OD	7WWM-S-BPE-0600-PL-6



7RWWW-BPE

BPE Buttweld Reducing Tees

Size	A	B	Surface Finish	316L Item Number
.75 x .5 in 19.0 x 12.7 mm	2.00 in 50.8 mm	2.00 in 50.8 mm	20ID/UNPOL OD	7RWWW-BPE-0075X0050-PC-6
.75 x .5 in 19.0 x 12.7 mm	2.00 in 50.8 mm	2.00 in 50.8 mm	20ID/32OD	7RWWW-BPE-0075X0050-PL-6
1 x .5 in 25.4 x 12.7 mm	2.125 in 54.0 mm	2.125 in 54.0 mm	20ID/UNPOL OD	7RWWW-BPE-0100X0050-PC-6
1 x .5 in 25.4 x 12.7 mm	2.125 in 54.0 mm	2.125 in 54.0 mm	20ID/32OD	7RWWW-BPE-0100X0050-PL-6
1 x .75 in 25.4 x 19.0 mm	2.125 in 54.0 mm	2.125 in 54.0 mm	20ID/UNPOL OD	7RWWW-BPE-0100X0075-PC-6
1 x .75 in 25.4 x 19.0 mm	2.125 in 54.0 mm	2.125 in 54.0 mm	20ID/32OD	7RWWW-BPE-0100X0075-PL-6
1.5 x .5 in 38.1 x 12.7 mm	2.375 in 60.3 mm	2.375 in 60.3 mm	20ID/UNPOL OD	7RWWW-BPE-0150X0050-PC-6
1.5 x .5 in 38.1 x 12.7 mm	2.375 in 60.3 mm	2.375 in 60.3 mm	20ID/32OD	7RWWW-BPE-0150X0050-PL-6
1.5 x .75 in 38.1 x 19.0 mm	2.375 in 60.3 mm	2.375 in 60.3 mm	20ID/UNPOL OD	7RWWW-BPE-0150X0075-PC-6
1.5 x .75 in 38.1 x 19.0 mm	2.375 in 60.3 mm	2.375 in 60.3 mm	20ID/32OD	7RWWW-BPE-0150X0075-PL-6
1.5 x 1 in 38.1 x 25.4 mm	2.375 in 60.3 mm	2.375 in 60.3 mm	20ID/UNPOL OD	7RWWW-BPE-0150X0100-PC-6
1.5 x 1 in 38.1 x 25.4 mm	2.375 in 60.3 mm	2.375 in 60.3 mm	20ID/32OD	7RWWW-BPE-0150X0100-PL-6
2 x .5 in 50.8 x 12.7 mm	2.875 in 73.0 mm	2.625 in 66.7 mm	20ID/UNPOL OD	7RWWW-BPE-0200X0050-PC-6
2 x .5 in 50.8 x 12.7 mm	2.875 in 73.0 mm	2.625 in 66.7 mm	20ID/32OD	7RWWW-BPE-0200X0050-PL-6
2 x .75 in 50.8 x 19.0 mm	2.875 in 73.0 mm	2.625 in 66.7 mm	20ID/UNPOL OD	7RWWW-BPE-0200X0075-PC-6
2 x .75 in 50.8 x 19.0 mm	2.875 in 73.0 mm	2.625 in 66.7 mm	20ID/32OD	7RWWW-BPE-0200X0075-PL-6
2 x 1 in 50.8 x 25.4 mm	2.875 in 73.0 mm	2.625 in 66.7 mm	20ID/UNPOL OD	7RWWW-BPE-0200X0100-PC-6
2 x 1 in 50.8 x 25.4 mm	2.875 in 73.0 mm	2.625 in 66.7 mm	20ID/32OD	7RWWW-BPE-0200X0100-PL-6

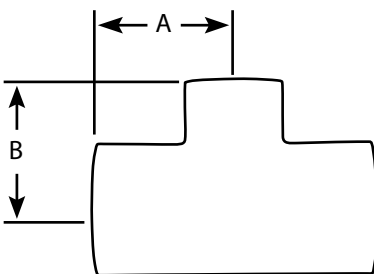


7RWW-BPE

Continued

BPE Buttweild Reducing Tees

Size	A	B	Surface Finish	316L Item Number
2 x 1.5 in 50.8 x 38.1 mm	2.875 in 73.0 mm	2.625 in 66.7 mm	20ID/UNPOL OD	7RWW-BPE-0200X0150-PC-6
2 x 1.5 in 50.8 x 38.1 mm	2.875 in 73.0 mm	2.625 in 66.7 mm	20ID/32OD	7RWW-BPE-0200X0150-PL-6
2.5 x .5 in 63.5 x 12.7 mm	3.125 in 79.4 mm	2.875 in 73.0 mm	20ID/UNPOL OD	7RWW-BPE-0250X0050-PC-6
2.5 x .5 in 63.5 x 12.7 mm	3.125 in 79.4 mm	2.875 in 73.0 mm	20ID/32OD	7RWW-BPE-0250X0050-PL-6
2.5 x .75 in 63.5 x 19.0 mm	3.125 in 79.4 mm	2.875 in 73.0 mm	20ID/UNPOL OD	7RWW-BPE-0250X0075-PC-6
2.5 x .75 in 63.5 x 19.0 mm	3.125 in 79.4 mm	2.875 in 73.0 mm	20ID/32OD	7RWW-BPE-0250X0075-PL-6
2.5 x 1 in 63.5 x 25.4 mm	3.125 in 79.4 mm	2.875 in 73.0 mm	20ID/UNPOL OD	7RWW-BPE-0250X0100-PC-6
2.5 x 1 in 63.5 x 25.4 mm	3.125 in 79.4 mm	2.875 in 73.0 mm	20ID/32OD	7RWW-BPE-0250X0100-PL-6
2.5 x 1.5 in 63.5 x 38.1 mm	3.125 in 79.4 mm	2.875 in 73.0 mm	20ID/UNPOL OD	7RWW-BPE-0250X0150-PC-6
2.5 x 1.5 in 63.5 x 38.1 mm	3.125 in 79.4 mm	2.875 in 73.0 mm	20ID/32OD	7RWW-BPE-0250X0150-PL-6
2.5 x 2 in 63.5 x 50.8 mm	3.125 in 79.4 mm	2.875 in 73.0 mm	20ID/UNPOL OD	7RWW-BPE-0250X0200-PC-6
2.5 x 2 in 63.5 x 50.8 mm	3.125 in 79.4 mm	2.875 in 73.0 mm	20ID/32OD	7RWW-BPE-0250X0200-PL-6
3 x .5 in 76.2 x 12.7 mm	3.375 in 85.7 mm	3.125 in 79.4 mm	20ID/UNPOL OD	7RWW-BPE-0300X0050-PC-6
3 x .5 in 76.2 x 12.7 mm	3.375 in 85.7 mm	3.125 in 79.4 mm	20ID/32OD	7RWW-BPE-0300X0050-PL-6
3 x .75 in 76.2 x 19.0 mm	3.375 in 85.7 mm	3.125 in 79.4 mm	20ID/UNPOL OD	7RWW-BPE-0300X0075-PC-6
3 x .75 in 76.2 x 19.0 mm	3.375 in 85.7 mm	3.125 in 79.4 mm	20ID/32OD	7RWW-BPE-0300X0075-PL-6
3 x 1 in 76.2 x 25.4 mm	3.375 in 85.7 mm	3.125 in 79.4 mm	20ID/UNPOL OD	7RWW-BPE-0300X0100-PC-6
3 x 1 in 76.2 x 25.4 mm	3.375 in 85.7 mm	3.125 in 79.4 mm	20ID/32OD	7RWW-BPE-0300X0100-PL-6

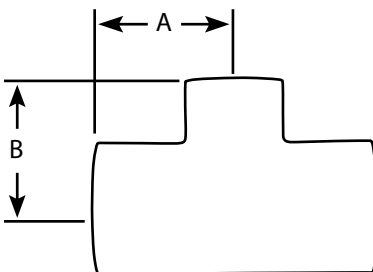


7RWWW-BPE

Continued

BPE Butt Weld Reducing Tees

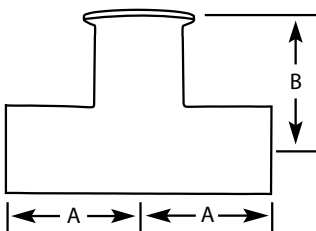
Size	A	B	Surface Finish	316L Item Number
3 x 1.5 in 76.2 x 38.1 mm	3.375 in 85.7 mm	3.125 in 79.4 mm	20ID/UNPOL OD	7RWWW-BPE-0300X0150-PC-6
3 x 1.5 in 76.2 x 38.1 mm	3.375 in 85.7 mm	3.125 in 79.4 mm	20ID/32OD	7RWWW-BPE-0300X0150-PL-6
3 x 2 in 76.2 x 50.8 mm	3.375 in 85.7 mm	3.125 in 79.4 mm	20ID/UNPOL OD	7RWWW-BPE-0300X0200-PC-6
3 x 2 in 76.2 x 50.8 mm	3.375 in 85.7 mm	3.125 in 79.4 mm	20ID/32OD	7RWWW-BPE-0300X0200-PL-6
4 x .5 in 101.6 x 12.7 mm	4.125 in 104.8 mm	3.625 in 92.1 mm	20ID/UNPOL OD	7RWWW-BPE-0400X0050-PC-6
4 x .5 in 101.6 x 12.7 mm	4.125 in 104.8 mm	3.625 in 92.1 mm	20ID/32OD	7RWWW-BPE-0400X0050-PL-6
4 x .75 in 101.6 x 19.0 mm	4.125 in 104.8 mm	3.625 in 92.1 mm	20ID/UNPOL OD	7RWWW-BPE-0400X0075-PC-6
4 x .75 in 101.6 x 19.0 mm	4.125 in 104.8 mm	3.625 in 92.1 mm	20ID/32OD	7RWWW-BPE-0400X0075-PL-6
4 x 1 in 101.6 x 25.4 mm	4.125 in 104.8 mm	3.625 in 92.1 mm	20ID/UNPOL OD	7RWWW-BPE-0400X0100-PC-6
4 x 1 in 101.6 x 25.4 mm	4.125 in 104.8 mm	3.625 in 92.1 mm	20ID/32OD	7RWWW-BPE-0400X0100-PL-6
4 x 1.5 in 101.6 x 38.1 mm	4.125 in 104.8 mm	3.625 in 92.1 mm	20ID/UNPOL OD	7RWWW-BPE-0400X0150-PC-6
4 x 1.5 in 101.6 x 38.1 mm	4.125 in 104.8 mm	3.625 in 92.1 mm	20ID/32OD	7RWWW-BPE-0400X0150-PL-6
4 x 2 in 101.6 x 50.8 mm	4.125 in 104.8 mm	3.625 in 92.1 mm	20ID/UNPOL OD	7RWWW-BPE-0400X0200-PC-6
4 x 2 in 101.6 x 50.8 mm	4.125 in 104.8 mm	3.625 in 92.1 mm	20ID/32OD	7RWWW-BPE-0400X0200-PL-6
4 x 2.5 in 101.6 x 63.5 mm	4.125 in 104.8 mm	3.625 in 92.1 mm	20ID/UNPOL OD	7RWWW-BPE-0400X0250-PC-6
4 x 2.5 in 101.6 x 63.5 mm	4.125 in 104.8 mm	3.625 in 92.1 mm	20ID/32OD	7RWWW-BPE-0400X0250-PL-6
4 x 3 in 101.6 x 76.2 mm	4.125 in 104.8 mm	3.625 in 92.1 mm	20ID/UNPOL OD	7RWWW-BPE-0400X0300-PC-6
4 x 3 in 101.6 x 76.2 mm	4.125 in 104.8 mm	3.625 in 92.1 mm	20ID/32OD	7RWWW-BPE-0400X0300-PL-6



7RWWM-BPE

Buttweld Reducing Tee with Clamp Branch

Size	A	B	Surface Finish	316L Item Number
.75 x .5 in 19.0 x 12.7 mm	2.00 in 50.8 mm	2.50 in 63.5 mm	20ID/UNPOL OD	7RWWM-BPE-0075X0050-PC-6
.75 x .5 in 19.0 x 12.7 mm	2.00 in 50.8 mm	2.50 in 63.5 mm	20ID/32OD	7RWWM-BPE-0075X0050-PL-6
1 x .5 in 25.4 x 12.7 mm	2.125 in 54.0 mm	2.625 in 66.7 mm	20ID/UNPOL OD	7RWWM-BPE-0100X0050-PC-6
1 x .5 in 25.4 x 12.7 mm	2.125 in 54.0 mm	2.625 in 66.7 mm	20ID/32OD	7RWWM-BPE-0100X0050-PL-6
1 x .75 in 25.4 x 19.0 mm	2.125 in 54.0 mm	2.625 in 66.7 mm	20ID/UNPOL OD	7RWWM-BPE-0100X0075-PC-6
1 x .75 in 25.4 x 19.0 mm	2.125 in 54.0 mm	2.625 in 66.7 mm	20ID/32OD	7RWWM-BPE-0100X0075-PL-6
1.5 x .5 in 38.1 x 12.7 mm	2.375 in 60.3 mm	2.875 in 73.0 mm	20ID/UNPOL OD	7RWWM-BPE-0150X0050-PC-6
1.5 x .5 in 38.1 x 12.7 mm	2.375 in 60.3 mm	2.875 in 73.0 mm	20ID/32OD	7RWWM-BPE-0150X0050-PL-6
1.5 x .75 in 38.1 x 19.0 mm	2.375 in 60.3 mm	2.875 in 73.0 mm	20ID/UNPOL OD	7RWWM-BPE-0150X0075-PC-6
1.5 x .75 in 38.1 x 19.0 mm	2.375 in 60.3 mm	2.875 in 73.0 mm	20ID/32OD	7RWWM-BPE-0150X0075-PL-6
1.5 x 1 in 38.1 x 25.4 mm	2.375 in 60.3 mm	2.875 in 73.0 mm	20ID/UNPOL OD	7RWWM-BPE-0150X0100-PC-6
1.5 x 1 in 38.1 x 25.4 mm	2.375 in 60.3 mm	2.875 in 73.0 mm	20ID/32OD	7RWWM-BPE-0150X0100-PL-6
2 x .5 in 50.8 x 12.7 mm	2.875 in 73.0 mm	3.125 in 79.4 mm	20ID/UNPOL OD	7RWWM-BPE-0200X0050-PC-6
2 x .5 in 50.8 x 12.7 mm	2.875 in 73.0 mm	3.125 in 79.4 mm	20ID/32OD	7RWWM-BPE-0200X0050-PL-6
2 x .75 in 50.8 x 19.0 mm	2.875 in 73.0 mm	3.125 in 79.4 mm	20ID/UNPOL OD	7RWWM-BPE-0200X0075-PC-6
2 x .75 in 50.8 x 19.0 mm	2.875 in 73.0 mm	3.125 in 79.4 mm	20ID/32OD	7RWWM-BPE-0200X0075-PL-6
2 x 1 in 50.8 x 25.4 mm	2.875 in 73.0 mm	3.125 in 79.4 mm	20ID/UNPOL OD	7RWWM-BPE-0200X0100-PC-6
2 x 1 in 50.8 x 25.4 mm	2.875 in 73.0 mm	3.125 in 79.4 mm	20ID/32OD	7RWWM-BPE-0200X0100-PL-6

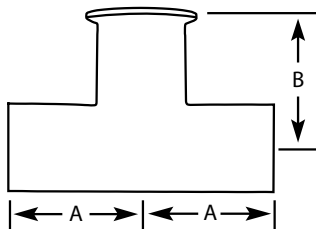


7RWWM-BPE

Continued

Buttweld Reducing Tee with Clamp Branch

Size	A	B	Surface Finish	316L Item Number
2 x 1.5 in 50.8 x 38.1 mm	2.875 in 73.0 mm	3.125 in 79.4 mm	20ID/UNPOL OD	7RWWM-BPE-0200X0150-PC-6
2 x 1.5 in 50.8 x 38.1 mm	2.875 in 73.0 mm	3.125 in 79.4 mm	20ID/32OD	7RWWM-BPE-0200X0150-PL-6
2.5 x 0.5 in 63.5 x 12.7 mm	3.125 in 79.4 mm	3.375 in 85.7 mm	20ID/UNPOL OD	7RWWM-BPE-0250X0050-PC-6
2.5 x 0.5 in 63.5 x 12.7 mm	3.125 in 79.4 mm	3.375 in 85.7 mm	20ID/32OD	7RWWM-BPE-0250X0050-PL-6
2.5 x 1 in 63.5 x 25.4 mm	3.125 in 79.4 mm	3.375 in 85.7 mm	20ID/UNPOL OD	7RWWM-BPE-0250X0100-PC-6
2.5 x 1 in 63.5 x 25.4 mm	3.125 in 79.4 mm	3.375 in 85.7 mm	20ID/32OD	7RWWM-BPE-0250X0100-PL-6
2.5 x 1.5 in 63.5 x 38.1 mm	3.125 in 79.4 mm	3.375 in 85.7 mm	20ID/UNPOL OD	7RWWM-BPE-0250X0150-PC-6
2.5 x 1.5 in 63.5 x 38.1 mm	3.125 in 79.4 mm	3.375 in 85.7 mm	20ID/32OD	7RWWM-BPE-0250X0150-PL-6
2.5 x 2 in 63.5 x 50.8 mm	3.125 in 79.4 mm	3.375 in 85.7 mm	20ID/UNPOL OD	7RWWM-BPE-0250X0200-PC-6
2.5 x 2 in 63.5 x 50.8 mm	3.125 in 79.4 mm	3.375 in 85.7 mm	20ID/32OD	7RWWM-BPE-0250X0200-PL-6
3 x 1 in 76.2 x 25.4 mm	3.375 in 85.7 mm	3.625 in 92.1 mm	20ID/UNPOL OD	7RWWM-BPE-0300X0100-PC-6
3 x 1 in 76.2 x 25.4 mm	3.375 in 85.7 mm	3.625 in 92.1 mm	20ID/32OD	7RWWM-BPE-0300X0100-PL-6
3 x 1.5 in 76.2 x 38.1 mm	3.375 in 85.7 mm	3.625 in 92.1 mm	20ID/UNPOL OD	7RWWM-BPE-0300X0150-PC-6
3 x 1.5 in 76.2 x 38.1 mm	3.375 in 85.7 mm	3.625 in 92.1 mm	20ID/32OD	7RWWM-BPE-0300X0150-PL-6

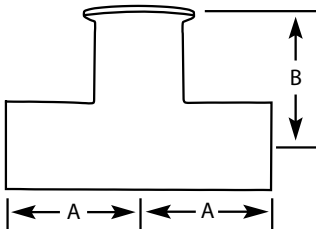


7RWWM-BPE

Continued

Buttweld Reducing Tee with Clamp Branch

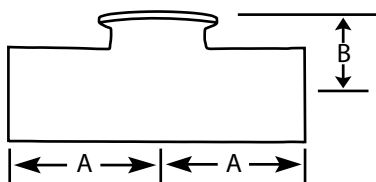
Size	A	B	Surface Finish	316L Item Number
3 x 2 in 76.2 x 50.8 mm	3.375 in 85.7 mm	3.625 in 92.1 mm	20ID/UNPOL OD	7RWWM-BPE-0300X0200-PC-6
3 x 2 in 76.2 x 50.8 mm	3.375 in 85.7 mm	3.625 in 92.1 mm	20ID/32OD	7RWWM-BPE-0300X0200-PL-6
3 x 2.5 in 76.2 x 63.5 mm	3.375 in 85.7 mm	3.625 in 92.1 mm	20ID/UNPOL OD	7RWWM-BPE-0300X0250-PC-6
3 x 2.5 in 76.2 x 63.5 mm	3.375 in 85.7 mm	3.625 in 92.1 mm	20ID/32OD	7RWWM-BPE-0300X0250-PL-6
4 x 1 in 101.6 x 25.4 mm	4.125 in 104.8 mm	4.125 in 104.8 mm	20ID/UNPOL OD	7RWWM-BPE-0400X0100-PC-6
4 x 1 in 101.6 x 25.4 mm	4.125 in 104.8 mm	4.125 in 104.8 mm	20ID/32OD	7RWWM-BPE-0400X0100-PL-6
4 x 1.5 in 101.6 x 38.1 mm	4.125 in 104.8 mm	4.125 in 104.8 mm	20ID/UNPOL OD	7RWWM-BPE-0400X0150-PC-6
4 x 1.5 in 101.6 x 38.1 mm	4.125 in 104.8 mm	4.125 in 104.8 mm	20ID/32OD	7RWWM-BPE-0400X0150-PL-6
4 x 2 in 101.6 x 50.8 mm	4.125 in 104.8 mm	4.125 in 104.8 mm	20ID/UNPOL OD	7RWWM-BPE-0400X0200-PC-6
4 x 2 in 101.6 x 50.8 mm	4.125 in 104.8 mm	4.125 in 104.8 mm	20ID/32OD	7RWWM-BPE-0400X0200-PL-6
4 x 2.5 in 101.6 x 63.5 mm	4.125 in 104.8 mm	4.125 in 104.8 mm	20ID/UNPOL OD	7RWWM-BPE-0400X0250-PC-6
4 x 2.5 in 101.6 x 63.5 mm	4.125 in 104.8 mm	4.125 in 104.8 mm	20ID/32OD	7RWWM-BPE-0400X0250-PL-6
4 x 3 in 101.6 x 76.2 mm	4.125 in 104.8 mm	4.125 in 104.8 mm	20ID/UNPOL OD	7RWWM-BPE-0400X0300-PC-6
4 x 3 in 101.6 x 76.2 mm	4.125 in 104.8 mm	4.125 in 104.8 mm	20ID/32OD	7RWWM-BPE-0400X0300-PL-6



7RWWM-S-BPE

Buttweld Reducing Tee with Short Clamp Branch

Size	A	B	Surface Finish	316L Item Number
.75 x .5 in 19.0 x 12.7 mm	2.00 in 50.8 mm	1.00 in 25.4 mm	20ID/UNPOL OD	7RWWM-S-BPE- 0075X0050-PC-6
.75 x .5 in 19.0 x 12.7 mm	2.00 in 50.8 mm	1.00 in 25.4 mm	20ID/32OD	7RWWM-S-BPE- 0075X0050-PL-6
1 x .5 in 25.4 x 12.7 mm	2.125 in 54.0 mm	1.125 in 28.6 mm	20ID/UNPOL OD	7RWWM-S-BPE- 0100X0050-PC-6
1 x .5 in 25.4 x 12.7 mm	2.125 in 54.0 mm	1.125 in 28.6 mm	20ID/32OD	7RWWM-S-BPE- 0100X0050-PL-6
1 x .75 in 25.4 x 19.0 mm	2.125 in 54.0 mm	1.125 in 28.6 mm	20ID/UNPOL OD	7RWWM-S-BPE- 0100X0075-PC-6
1 x .75 in 25.4 x 19.0 mm	2.125 in 54.0 mm	1.125 in 28.6 mm	20ID/32OD	7RWWM-S-BPE- 0100X0075-PL-6
1.5 x .5 in 38.1 x 12.7 mm	2.375 in 60.3 mm	1.375 in 34.9 mm	20ID/UNPOL OD	7RWWM-S-BPE- 0150X0050-PC-6
1.5 x .5 in 38.1 x 12.7 mm	2.375 in 60.3 mm	1.375 in 34.9 mm	20ID/32OD	7RWWM-S-BPE- 0150X0050-PL-6
1.5 x .75 in 38.1 x 19.0 mm	2.375 in 60.3 mm	1.375 in 34.9 mm	20ID/UNPOL OD	7RWWM-S-BPE- 0150X0075-PC-6
1.5 x .75 in 38.1 x 19.0 mm	2.375 in 60.3 mm	1.375 in 34.9 mm	20ID/32OD	7RWWM-S-BPE- 0150X0075-PL-6
1.5 x 1 in 38.1 x 25.4 mm	2.375 in 60.3 mm	1.375 in 34.9 mm	20ID/UNPOL OD	7RWWM-S-BPE- 0150X0100-PC-6
1.5 x 1 in 38.1 x 25.4 mm	2.375 in 60.3 mm	1.375 in 34.9 mm	20ID/32OD	7RWWM-S-BPE- 0150X0100-PL-6
2 x .5 in 50.8 x 12.7 mm	2.875 in 73.0 mm	1.625 in 41.3 mm	20ID/UNPOL OD	7RWWM-S-BPE- 0200X0050-PC-6
2 x .5 in 50.8 x 12.7 mm	2.875 in 73.0 mm	1.625 in 41.3 mm	20ID/32OD	7RWWM-S-BPE- 0200X0050-PL-6
2 x .75 in 50.8 x 19.0 mm	2.875 in 73.0 mm	1.625 in 41.3 mm	20ID/UNPOL OD	7RWWM-S-BPE- 0200X0075-PC-6
2 x .75 in 50.8 x 19.0 mm	2.875 in 73.0 mm	1.625 in 41.3 mm	20ID/32OD	7RWWM-S-BPE- 0200X0075-PL-6
2 x 1 in 50.8 x 25.4 mm	2.875 in 73.0 mm	1.625 in 41.3 mm	20ID/UNPOL OD	7RWWM-S-BPE- 0200X0100-PC-6
2 x 1 in 50.8 x 25.4 mm	2.875 in 73.0 mm	1.625 in 41.3 mm	20ID/32OD	7RWWM-S-BPE- 0200X0100-PL-6
2 x 1.5 in 50.8 x 38.1 mm	2.875 in 73.0 mm	1.625 in 41.3 mm	20ID/UNPOL OD	7RWWM-S-BPE- 0200X0150-PC-6

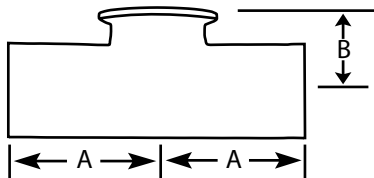


7RWM-S-BPE

Continued

Butt Weld Reducing Tee with Short Clamp Branch

Size	A	B	Surface Finish	316L Item Number
2 x 1.5 in 50.8 x 38.1 mm	2.875 in 73.0 mm	1.625 in 41.3 mm	20ID/32OD	7RWM-S-BPE-0200X0150-PL-6
2.5 x .5 in 63.5 x 12.7 mm	3.125 in 79.4 mm	1.875 in 47.6 mm	20ID/UNPOL OD	7RWM-S-BPE-0250X0050-PC-6
2.5 x .5 in 63.5 x 12.7 mm	3.125 in 79.4 mm	1.875 in 47.6 mm	20ID/32OD	7RWM-S-BPE-0250X0050-PL-6
2.5 x .75 in 63.5 x 19.0 mm	3.125 in 79.4 mm	1.875 in 47.6 mm	20ID/UNPOL OD	7RWM-S-BPE-0250X0075-PC-6
2.5 x .75 in 63.5 x 19.0 mm	3.125 in 79.4 mm	1.875 in 47.6 mm	20ID/32OD	7RWM-S-BPE-0250X0075-PL-6
2.5 x 1 in 63.5 x 25.4 mm	3.125 in 79.4 mm	1.875 in 47.6 mm	20ID/UNPOL OD	7RWM-S-BPE-0250X0100-PC-6
2.5 x 1 in 63.5 x 25.4 mm	3.125 in 79.4 mm	1.875 in 47.6 mm	20ID/32OD	7RWM-S-BPE-0250X0100-PL-6
2.5 x 1.5 in 63.5 x 38.1 mm	3.125 in 79.4 mm	1.875 in 47.6 mm	20ID/UNPOL OD	7RWM-S-BPE-0250X0150-PC-6
2.5 x 1.5 in 63.5 x 38.1 mm	3.125 in 79.4 mm	1.875 in 47.6 mm	20ID/32OD	7RWM-S-BPE-0250X0150-PL-6
2.5 x 2 in 63.5 x 50.8 mm	3.125 in 79.4 mm	1.875 in 47.6 mm	20ID/UNPOL OD	7RWM-S-BPE-0250X0200-PC-6
2.5 x 2 in 63.5 x 50.8 mm	3.125 in 79.4 mm	1.875 in 47.6 mm	20ID/32OD	7RWM-S-BPE-0250X0200-PL-6
3 x .5 in 76.2 x 12.7 mm	3.375 in 85.7 mm	2.125 in 54.0 mm	20ID/UNPOL OD	7RWM-S-BPE-0300X0050-PC-6
3 x .5 in 76.2 x 12.7 mm	3.375 in 85.7 mm	2.125 in 54.0 mm	20ID/32OD	7RWM-S-BPE-0300X0050-PL-6
3 x .75 in 76.2 x 19.0 mm	3.375 in 85.7 mm	2.125 in 54.0 mm	20ID/UNPOL OD	7RWM-S-BPE-0300X0075-PC-6
3 x .75 in 76.2 x 19.0 mm	3.375 in 85.7 mm	2.125 in 54.0 mm	20ID/32OD	7RWM-S-BPE-0300X0075-PL-6
3 x 1 in 76.2 x 25.4 mm	3.375 in 85.7 mm	2.125 in 54.0 mm	20ID/UNPOL OD	7RWM-S-BPE-0300X0100-PC-6
3 x 1 in 76.2 x 25.4 mm	3.375 in 85.7 mm	2.125 in 54.0 mm	20ID/32OD	7RWM-S-BPE-0300X0100-PL-6
3 x 1.5 in 76.2 x 38.1 mm	3.375 in 85.7 mm	2.125 in 54.0 mm	20ID/UNPOL OD	7RWM-S-BPE-0300X0150-PC-6
3 x 1.5 in 76.2 x 38.1 mm	3.375 in 85.7 mm	2.125 in 54.0 mm	20ID/32OD	7RWM-S-BPE-0300X0150-PL-6

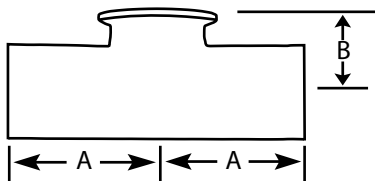


7RWWM-S-BPE

Continued

Buttweld Reducing Tee with Short Clamp Branch

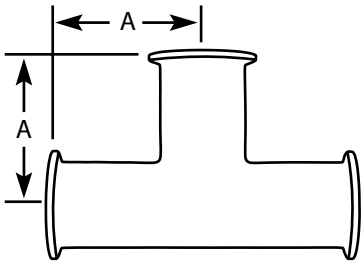
Size	A	B	Surface Finish	316L Item Number
3 x 2 in 76.2 x 50.8 mm	3.375 in 85.7 mm	2.125 in 54.0 mm	20ID/UNPOL OD	7RWWM-S-BPE- 0300X0200-PC-6
3 x 2 in 76.2 x 50.8 mm	3.375 in 85.7 mm	2.125 in 54.0 mm	20ID/32OD	7RWWM-S-BPE- 0300X0200-PL-6
4 x .5 in 101.6 x 12.7 mm	4.125 in 104.8 mm	2.625 in 66.7 mm	20ID/UNPOL OD	7RWWM-S-BPE- 0400X0050-PC-6
4 x .5 in 101.6 x 12.7 mm	4.125 in 104.8 mm	2.625 in 66.7 mm	20ID/32OD	7RWWM-S-BPE- 0400X0050-PL-6
4 x .75 in 101.6 x 19.0 mm	4.125 in 104.8 mm	2.625 in 66.7 mm	20ID/UNPOL OD	7RWWM-S-BPE- 0400X0075-PC-6
4 x .75 in 101.6 x 19.0 mm	4.125 in 104.8 mm	2.625 in 66.7 mm	20ID/32OD	7RWWM-S-BPE- 0400X0075-PL-6
4 x 1 in 101.6 x 25.4 mm	4.125 in 104.8 mm	2.625 in 66.7 mm	20ID/UNPOL OD	7RWWM-S-BPE- 0400X0100-PC-6
4 x 1 in 101.6 x 25.4 mm	4.125 in 104.8 mm	2.625 in 66.7 mm	20ID/32OD	7RWWM-S-BPE- 0400X0100-PL-6
4 x 1.5 in 101.6 x 38.1 mm	4.125 in 104.8 mm	2.625 in 66.7 mm	20ID/UNPOL OD	7RWWM-S-BPE- 0400X0150-PC-6
4 x 1.5 in 101.6 x 38.1 mm	4.125 in 104.8 mm	2.625 in 66.7 mm	20ID/32OD	7RWWM-S-BPE- 0400X0150-PL-6
4 x 2 in 101.6 x 50.8 mm	4.125 in 104.8 mm	2.625 in 66.7 mm	20ID/UNPOL OD	7RWWM-S-BPE- 0400X0200-PC-6
4 x 2 in 101.6 x 50.8 mm	4.125 in 104.8 mm	2.625 in 66.7 mm	20ID/32OD	7RWWM-S-BPE- 0400X0200-PL-6
4 x 2.5 in 101.6 x 63.5 mm	4.125 in 104.8 mm	2.625 in 66.7 mm	20ID/UNPOL OD	7RWWM-S-BPE- 0400X0250-PC-6
4 x 2.5 in 101.6 x 63.5 mm	4.125 in 104.8 mm	2.625 in 66.7 mm	20ID/32OD	7RWWM-S-BPE- 0400X0250-PL-6
4 x 3 in 101.6 x 76.2 mm	4.125 in 104.8 mm	2.625 in 66.7 mm	20ID/UNPOL OD	7RWWM-S-BPE- 0400X0300-PC-6
4 x 3 in 101.6 x 76.2 mm	4.125 in 104.8 mm	2.625 in 66.7 mm	20ID/32OD	7RWWM-S-BPE- 0400X0300-PL-6



7MP-BPE

Clamp Equal Tee

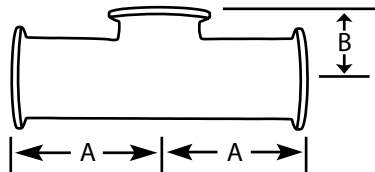
Size	A	Surface Finish	316L Item Number
.5 in 12.7 mm	2.250 in 57.2 mm	20ID/UNPOL OD	7MP-BPE-0050-PC-6
.5 in 12.7 mm	2.250 in 57.2 mm	20ID/32OD	7MP-BPE-0050-PL-6
.75 in 19.0 mm	2.375 in 60.3 mm	20ID/UNPOL OD	7MP-BPE-0075-PC-6
.75 in 19.0 mm	2.375 in 60.3 mm	20ID/32OD	7MP-BPE-0075-PL-6
1 in 25.4 mm	2.625 in 66.7 mm	20ID/UNPOL OD	7MP-BPE-0100-PC-6
1 in 25.4 mm	2.625 in 66.7 mm	20ID/32OD	7MP-BPE-0100-PL-6
1.5 in 38.1 mm	2.875 in 73.0 mm	20ID/UNPOL OD	7MP-BPE-0150-PC-6
1.5 in 38.1 mm	2.875 in 73.0 mm	20ID/32OD	7MP-BPE-0150-PL-6
2 in 50.8 mm	3.375 in 85.7 mm	20ID/UNPOL OD	7MP-BPE-0200-PC-6
2 in 50.8 mm	3.375 in 85.7 mm	20ID/32OD	7MP-BPE-0200-PL-6
2.5 in 63.5 mm	3.625 in 92.1 mm	20ID/UNPOL OD	7MP-BPE-0250-PC-6
2.5 in 63.5 mm	3.625 in 92.1 mm	20ID/32OD	7MP-BPE-0250-PL-6
3 in 76.2 mm	3.875 in 98.4 mm	20ID/UNPOL OD	7MP-BPE-0300-PC-6
3 in 76.2 mm	3.875 in 98.4 mm	20ID/32OD	7MP-BPE-0300-PL-6
4 in 101.6 mm	4.750 in 121.0 mm	20ID/UNPOL OD	7MP-BPE-0400-PC-6
4 in 101.6 mm	4.750 in 121.0 mm	20ID/32OD	7MP-BPE-0400-PL-6
6 in 152.4 mm	7.125 in 181.0 mm	20ID/UNPOL OD	7MP-BPE-0600-PC-6
6 in 152.4 mm	7.125 in 181.0 mm	20ID/32OD	7MP-BPE-0600-PL-6



7MPS-BPE

Short Outlet Clamp Equal Tee

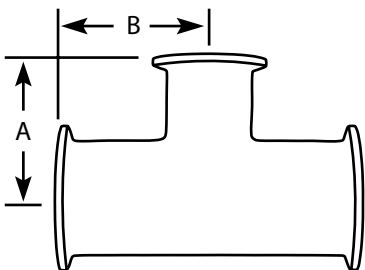
Size	A	B	Surface Finish	316L Item Number
.5 in 12.7 mm	2.250 in 57.2 mm	1.00 in 25.4 mm	20ID/UNPOL OD	7MPS-BPE-0050-PC-6
.5 in 12.7 mm	2.250 in 57.2 mm	1.00 in 25.4 mm	20ID/32OD	7MPS-BPE-0050-PL-6
.75 in 19.0 mm	2.375 in 60.3 mm	1.125 in 28.6 mm	20ID/UNPOL OD	7MPS-BPE-0075-PC-6
.75 in 19.0 mm	2.375 in 60.3 mm	1.125 in 28.6 mm	20ID/32OD	7MPS-BPE-0075-PL-6
1 in 25.4 mm	2.625 in 66.7 mm	1.125 in 28.6 mm	20ID/UNPOL OD	7MPS-BPE-0100-PC-6
1 in 25.4 mm	2.625 in 66.7 mm	1.125 in 28.6 mm	20ID/32OD	7MPS-BPE-0100-PL-6
1.5 in 38.1 mm	2.875 in 73.0 mm	1.375 in 34.9 mm	20ID/UNPOL OD	7MPS-BPE-0150-PC-6
1.5 in 38.1 mm	2.875 in 73.0 mm	1.375 in 34.9 mm	20ID/32OD	7MPS-BPE-0150-PL-6
2 in 50.8 mm	3.375 in 85.7 mm	1.625 in 41.3 mm	20ID/UNPOL OD	7MPS-BPE-0200-PC-6
2 in 50.8 mm	3.375 in 85.7 mm	1.625 in 41.3 mm	20ID/32OD	7MPS-BPE-0200-PL-6
2.5 in 63.5 mm	3.625 in 92.1 mm	1.875 in 47.6 mm	20ID/UNPOL OD	7MPS-BPE-0250-PC-6
2.5 in 63.5 mmv	3.625 in 92.1 mm	1.875 in 47.6 mm	20ID/32OD	7MPS-BPE-0250-PL-6
3 in 76.2 mm	3.875 in 98.4 mm	2.125 in 54.0 mm	20ID/UNPOL OD	7MPS-BPE-0300-PC-6
3 in 76.2 mm	3.875 in 98.4 mm	2.125 in 54.0 mm	20ID/32OD	7MPS-BPE-0300-PL-6
4 in 101.6 mm	4.75 in 181.0 mm	2.75 in 69.9 mm	20ID/UNPOL OD	7MPS-BPE-0400-PC-6
4 in 101.6 mm	4.75 in 181.0 mm	2.75 in 69.9 mm	20ID/32OD	7MPS-BPE-0400-PL-6
6 in 152.4 mm	7.125 in 181.0 mm	4.625 in 117.5 mm	20ID/UNPOL OD	7MPS-BPE-0600-PC-6
6 in 152.4 mm	7.125 in 181.0 mm	4.625 in 117.5 mm	20ID/32OD	7MPS-BPE-0600-PL-6



7RMP-BPE

Clamp Reducing Tee

Size	A	B	Surface Finish	316L Item Number
.75 x .5 in 19.0 x 12.7 mm	2.50 in 63.5 mm	2.50 in 63.5 mm	20ID/UNPOL OD	7RMP-BPE-0075X0050-PC-6
.75 x .5 in 19.0 x 12.7 mm	2.50 in 63.5 mm	2.50 in 63.5 mm	20ID/32OD	7RMP-BPE-0075X0050-PL-6
1 x .5 in 25.4 x 12.7 mm	2.625 in 66.7 mm	2.625 in 66.7 mm	20ID/UNPOL OD	7RMP-BPE-0100X0050-PC-6
1 x .5 in 25.4 x 12.7 mm	2.625 in 66.7 mm	2.625 in 66.7 mm	20ID/32OD	7RMP-BPE-0100X0050-PL-6
1 x .75 in 25.4 x 19.0 mm	2.625 in 66.7 mm	2.625 in 66.7 mm	20ID/UNPOL OD	7RMP-BPE-0100X0075-PC-6
1 x .75 in 25.4 x 19.0 mm	2.625 in 66.7 mm	2.625 in 66.7 mm	20ID/32OD	7RMP-BPE-0100X0075-PL-6
1.5 x .5 in 38.1 x 12.7 mm	2.875 in 73.0 mm	2.875 in 73.0 mm	20ID/UNPOL OD	7RMP-BPE-0150X0050-PC-6
1.5 x .5 in 38.1 x 12.7 mm	2.875 in 73.0 mm	2.875 in 73.0 mm	20ID/32OD	7RMP-BPE-0150X0050-PL-6
1.5 x .75 in 38.1 x 19.0 mm	2.875 in 73.0 mm	2.875 in 73.0 mm	20ID/UNPOL OD	7RMP-BPE-0150X0075-PC-6
1.5 x .75 in 38.1 x 19.0 mm	2.875 in 73.0 mm	2.875 in 73.0 mm	20ID/32OD	7RMP-BPE-0150X0075-PL-6
1.5 x 1 in 38.1 x 25.4 mm	2.875 in 73.0 mm	2.875 in 73.0 mm	20ID/UNPOL OD	7RMP-BPE-0150X0100-PC-6
1.5 x 1 in 38.1 x 25.4 mm	2.875 in 73.0 mm	2.875 in 73.0 mm	20ID/32OD	7RMP-BPE-0150X0100-PL-6
2 x .5 in 50.8 x 12.7 mm	3.375 in 85.7 mm	3.125 in 79.4 mm	20ID/UNPOL OD	7RMP-BPE-0200X0050-PC-6
2 x .5 in 50.8 x 12.7 mm	3.375 in 85.7 mm	3.125 in 79.4 mm	20ID/32OD	7RMP-BPE-0200X0050-PL-6
2 x .75 in 50.8 x 19.0 mm	3.375 in 85.7 mm	3.125 in 79.4 mm	20ID/UNPOL OD	7RMP-BPE-0200X0075-PC-6
2 x .75 in 50.8 x 19.0 mm	3.375 in 85.7 mm	3.125 in 79.4 mm	20ID/32OD	7RMP-BPE-0200X0075-PL-6
2 x 1 in 50.8 x 25.4 mm	3.375 in 85.7 mm	3.125 in 79.4 mm	20ID/UNPOL OD	7RMP-BPE-0200X0100-PC-6
2 x 1 in 50.8 x 25.4 mm	3.375 in 85.7 mm	3.125 in 79.4 mm	20ID/32OD	7RMP-BPE-0200X0100-PL-6
2 x 1.5 in 50.8 x 38.1 mm	3.375 in 85.7 mm	3.125 in 79.4 mm	20ID/UNPOL OD	7RMP-BPE-0200X0150-PC-6

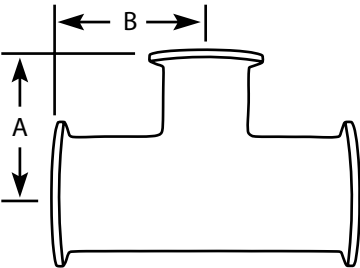


7RMP-BPE

Continued

Clamp Reducing Tee

Size	A	B	Surface Finish	316L Item Number
2 x 1.5 in 50.8 x 38.1 mm	3.375 in 85.7 mm	3.125 in 79.4 mm	20ID/32OD	7RMP-BPE-0200X0150-PL-6
2.5 x .5 in 63.5 x 12.7 mm	3.625 in 92.1 mm	3.375 in 85.7 mm	20ID/UNPOL OD	7RMP-BPE-0250X0050-PC-6
2.5 x .5 in 63.5 x 12.7 mm	3.625 in 92.1 mm	3.375 in 85.7 mm	20ID/32OD	7RMP-BPE-0250X0050-PL-6
2.5 x .75 in 63.5 x 19.0 mm	3.625 in 92.1 mm	3.375 in 85.7 mm	20ID/UNPOL OD	7RMP-BPE-0250X0075-PC-6
2.5 x .75 in 63.5 x 19.0 mm	3.625 in 92.1 mm	3.375 in 85.7 mm	20ID/32OD	7RMP-BPE-0250X0075-PL-6
2.5 x 1 in 63.5 x 25.4 mm	3.625 in 92.1 mm	3.375 in 85.7 mm	20ID/UNPOL OD	7RMP-BPE-0250X0100-PC-6
2.5 x 1 in 63.5 x 25.4 mm	3.625 in 92.1 mm	3.375 in 85.7 mm	20ID/32OD	7RMP-BPE-0250X0100-PL-6
2.5 x 1.5 in 63.5 x 38.1 mm	3.625 in 92.1 mm	3.375 in 85.7 mm	20ID/UNPOL OD	7RMP-BPE-0250X0150-PC-6
2.5 x 1.5 in 63.5 x 38.1 mm	3.625 in 92.1 mm	3.375 in 85.7 mm	20ID/32OD	7RMP-BPE-0250X0150-PL-6
2.5 x 2 in 63.5 x 50.8 mm	3.625 in 92.1 mm	3.375 in 85.7 mm	20ID/UNPOL OD	7RMP-BPE-0250X0200-PC-6
2.5 x 2 in 63.5 x 50.8 mm	3.625 in 92.1 mm	3.375 in 85.7 mm	20ID/32OD	7RMP-BPE-0250X0200-PL-6
3 x .5 in 76.2 x 12.7 mm	3.875 in 98.4 mm	3.625 in 92.1 mm	20ID/UNPOL OD	7RMP-BPE-0300X0050-PC-6
3 x .5 in 76.2 x 12.7 mm	3.875 in 98.4 mm	3.625 in 92.1 mm	20ID/32OD	7RMP-BPE-0300X0050-PL-6
3 x .75 in 76.2 x 19.0 mm	3.875 in 98.4 mm	3.625 in 92.1 mm	20ID/UNPOL OD	7RMP-BPE-0300X0075-PC-6
3 x .75 in 76.2 x 19.0 mm	3.875 in 98.4 mm	3.625 in 92.1 mm	20ID/32OD	7RMP-BPE-0300X0075-PL-6
3 x 1 in 76.2 x 25.4 mm	3.875 in 98.4 mm	3.625 in 92.1 mm	20ID/UNPOL OD	7RMP-BPE-0300X0100-PC-6
3 x 1 in 76.2 x 25.4 mm	3.875 in 98.4 mm	3.625 in 92.1 mm	20ID/32OD	7RMP-BPE-0300X0100-PL-6
3 x 1.5 in 76.2 x 38.1 mm	3.875 in 98.4 mm	3.625 in 92.1 mm	20ID/UNPOL OD	7RMP-BPE-0300X0150-PC-6

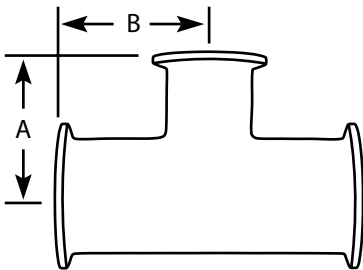


7RMP-BPE

Continued

Clamp Reducing Tee

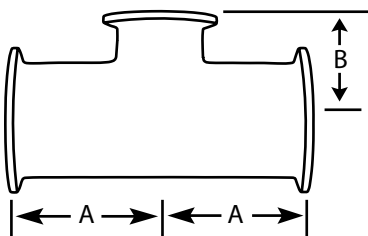
Size	A	B	Surface Finish	316L Item Number
3 x 1.5 in 76.2 x 38.1 mm	3.875 in 98.4 mm	3.625 in 92.1 mm	20ID/32OD	7RMP-BPE-0300X0150-PL-6
3 x 2 in 76.2 x 50.8 mm	3.875 in 98.4 mm	3.875 in 98.4 mm	20ID/UNPOL OD	7RMP-BPE-0300X0200-PC-6
3 x 2 in 76.2 x 50.8 mm	3.875 in 98.4 mm	3.875 in 98.4 mm	20ID/32OD	7RMP-BPE-0300X0200-PL-6
3 x 2.5 in 76.2 x 63.5 mm	3.875 in 98.4 mm	3.875 in 98.4 mm	20ID/UNPOL OD	7RMP-BPE-0300X0250-PC-6
3 x 2.5 in 76.2 x 63.5 mm	3.875 in 98.4 mm	3.875 in 98.4 mm	20ID/32OD	7RMP-BPE-0300X0250-PL-6
4 x .5 in 101.6 x 12.7 mm	4.75 in 120.7 mm	4.125 in 104.8 mm	20ID/UNPOL OD	7RMP-BPE-0400X0050-PC-6
4 x .5 in 101.6 x 12.7 mm	4.75 in 120.7 mm	4.125 in 104.8 mm	20ID/32OD	7RMP-S-BPE-0400X0050-PL-6
4 x .75 in 101.6 x 19.0 mm	4.75 in 120.7 mm	4.125 in 104.8 mm	20ID/UNPOL OD	7RMP-BPE-0400X0075-PC-6
4 x .75 in 101.6 x 19.0 mm	4.75 in 120.7 mm	4.125 in 104.8 mm	20ID/32OD	7RMP-BPE-0400X0075-PL-6
4 x 1 in 101.6 x 25.4 mm	4.75 in 120.7 mm	4.125 in 104.8 mm	20ID/UNPOL OD	7RMP-BPE-0400X0100-PC-6
4 x 1 in 101.6 x 25.4 mm	4.75 in 120.7 mm	4.125 in 104.8 mm	20ID/32OD	7RMP-BPE-0400X0100-PL-6
4 x 1.5 in 101.6 x 38.1 mm	4.75 in 120.7 mm	4.125 in 104.8 mm	20ID/UNPOL OD	7RMP-BPE-0400X0150-PC-6
4 x 1.5 in 101.6 x 38.1 mm	4.75 in 120.7 mm	4.125 in 104.8 mm	20ID/32OD	7RMP-BPE-0400X0150-PL-6
4 x 2 in 101.6 x 50.8 mm	4.75 in 120.7 mm	4.375 in 111.1 mm	20ID/UNPOL OD	7RMP-BPE-0400X0200-PC-6
4 x 2 in 101.6 x 50.8 mm	4.75 in 120.7 mm	4.375 in 111.1 mm	20ID/32OD	7RMP-BPE-0400X0200-PL-6
4 x 2.5 in 101.6 x 63.5 mm	4.75 in 120.7 mm	4.375 in 111.1 mm	20ID/UNPOL OD	7RMP-BPE-0400X0250-PC-6
4 x 2.5 in 101.6 x 63.5 mm	4.75 in 120.7 mm	4.375 in 111.1 mm	20ID/32OD	7RMP-BPE-0400X0250-PL-6
4 x 3 in 101.6 x 76.2 mm	4.75 in 120.7 mm	4.375 in 111.1 mm	20ID/UNPOL OD	7RMP-BPE-0400X0300-PC-6
4 x 3 in 101.6 x 76.2 mm	4.75 in 120.7 mm	4.375 in 111.1 mm	20ID/32OD	7RMP-BPE-0400X0300-PL-6



7RMP-S-BPE

Short Outlet Reducing Tee

Size	A	B	Surface Finish	316L Item Number
.75 x .5 in 19.0 x 12.7 mm	2.50 in 63.5 mm	1.00 in 25.4 mm	20ID/UNPOL OD	7RMP-S-BPE-0075X0050-PC-6
.75 x .5 in 19.0 x 12.7 mm	2.50 in 63.5 mm	1.00 in 25.4 mm	20ID/32OD	7RMP-S-BPE-0075X0050-PL-6
1 x .5 in 25.4 x 12.7 mm	2.625 in 66.7 mm	1.125 in 28.6 mm	20ID/UNPOL OD	7RMP-S-BPE-0100X0050-PC-6
1 x .5 in 25.4 x 12.7 mm	2.625 in 66.7 mm	1.125 in 28.6 mm	20ID/32OD	7RMP-S-BPE-0100X0050-PL-6
1 x .75 in 25.4 x 19.0 mm	2.625 in 66.7 mm	1.125 in 28.6 mm	20ID/UNPOL OD	7RMP-S-BPE-0100X0075-PC-6
1 x .75 in 25.4 x 19.0 mm	2.625 in 66.7 mm	1.125 in 28.6 mm	20ID/32OD	7RMP-S-BPE-0100X0075-PL-6
1.5 x .5 in 38.1 x 12.7 mm	2.875 in 73.0 mm	1.375 in 34.9 mm	20ID/UNPOL OD	7RMP-S-BPE-0150X0050-PC-6
1.5 x .5 in 38.1 x 12.7 mm	2.875 in 73.0 mm	1.375 in 34.9 mm	20ID/32OD	7RMP-S-BPE-0150X0050-PL-6
1.5 x .75 in 38.1 x 19.0 mm	2.875 in 73.0 mm	1.375 in 34.9 mm	20ID/UNPOL OD	7RMP-S-BPE-0150X0075-PC-6
1.5 x .75 in 38.1 x 19.0 mm	2.875 in 73.0 mm	1.375 in 34.9 mm	20ID/32OD	7RMP-S-BPE-0150X0075-PL-6
1.5 x 1 in 38.1 x 25.4 mm	2.875 in 73.0 mm	1.375 in 34.9 mm	20ID/UNPOL OD	7RMP-S-BPE-0150X0100-PC-6
1.5 x 1 in 38.1 x 25.4 mm	2.875 in 73.0 mm	1.375 in 34.9 mm	20ID/32OD	7RMP-S-BPE-0150X0100-PL-6
2 x .5 in 50.8 x 12.7 mm	3.375 in 85.7 mm	1.625 in 41.3 mm	20ID/UNPOL OD	7RMP-S-BPE-0200X0050-PC-6
2 x .5 in 50.8 x 12.7 mm	3.375 in 85.7 mm	1.625 in 41.3 mm	20ID/32OD	7RMP-S-BPE-0200X0050-PL-6
2 x .75 in 50.8 x 19.0 mm	3.375 in 85.7 mm	1.625 in 41.3 mm	20ID/UNPOL OD	7RMP-S-BPE-0200X0075-PC-6
2 x .75 in 50.8 x 19.0 mm	3.375 in 85.7 mm	1.625 in 41.3 mm	20ID/32OD	7RMP-S-BPE-0200X0075-PL-6
2 x 1 in 50.8 x 25.4 mm	3.375 in 85.7 mm	1.625 in 41.3 mm	20ID/UNPOL OD	7RMP-S-BPE-0200X0100-PC-6
2 x 1 in 50.8 x 25.4 mm	3.375 in 85.7 mm	1.625 in 41.3 mm	20ID/32OD	7RMP-S-BPE-0200X0100-PL-6
2 x 1.5 in 50.8 x 38.1 mm	3.375 in 85.7 mm	1.625 in 41.3 mm	20ID/UNPOL OD	7RMP-S-BPE-0200X0150-PC-6

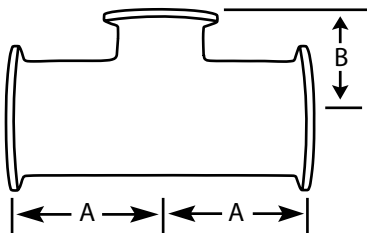


7RMP-S-BPE

Continued

Short Outlet Reducing Tee

Size	A	B	Surface Finish	316L Item Number
2 x 1.5 in 50.8 x 38.1 mm	3.375 in 85.7 mm	1.625 in 41.3 mm	20ID/32OD	7RMP-S-BPE-0200X0150-PL-6
2.5 x .5 in 63.5 x 12.7 mm	3.625 in 92.1 mm	1.875 in 47.6 mm	20ID/UNPOL OD	7RMP-S-BPE-0250X0050-PC-6
2.5 x .5 in 63.5 x 12.7 mm	3.625 in 92.1 mm	1.875 in 47.6 mm	20ID/32OD	7RMP-S-BPE-0250X0050-PL-6
2.5 x .75 in 63.5 x 19.0 mm	3.625 in 92.1 mm	1.875 in 47.6 mm	20ID/UNPOL OD	7RMP-S-BPE-0250X0075-PC-6
2.5 x .75 in 63.5 x 19.0 mm	3.625 in 92.1 mm	1.875 in 47.6 mm	20ID/32OD	7RMP-S-BPE-0250X0075-PL-6
2.5 x 1 in 63.5 x 25.4 mm	3.625 in 92.1 mm	1.875 in 47.6 mm	20ID/UNPOL OD	7RMP-S-BPE-0250X0100-PC-6
2.5 x 1 in 63.5 x 25.4 mm	3.625 in 92.1 mm	1.875 in 47.6 mm	20ID/32OD	7RMP-S-BPE-0250X0100-PL-6
2.5 x 1.5 in 63.5 x 38.1 mm	3.625 in 92.1 mm	1.875 in 47.6 mm	20ID/UNPOL OD	7RMP-S-BPE-0250X0150-PC-6
2.5 x 1.5 in 63.5 x 38.1 mm	3.625 in 92.1 mm	1.875 in 47.6 mm	20ID/32OD	7RMP-S-BPE-0250X0150-PL-6
2.5 x 2 in 63.5 x 50.8 mm	3.625 in 92.1 mm	1.875 in 47.6 mm	20ID/UNPOL OD	7RMP-S-BPE-0250X0200-PC-6
2.5 x 2 in 63.5 x 50.8 mm	3.625 in 92.1 mm	1.875 in 47.6 mm	20ID/32OD	7RMP-S-BPE-0250X0200-PL-6
3 x .5 in 76.2 x 12.7 mm	3.875 in 98.4 mm	2.125 in 54.0 mm	20ID/UNPOL OD	7RMP-S-BPE-0300X0050-PC-6
3 x .5 in 76.2 x 12.7 mm	3.875 in 98.4 mm	2.125 in 54.0 mm	20ID/32OD	7RMP-S-BPE-0300X0050-PL-6
3 x .75 in 76.2 x 19.0 mm	3.875 in 98.4 mm	2.125 in 54.0 mm	20ID/UNPOL OD	7RMP-S-BPE-0300X0075-PC-6
3 x .75 in 76.2 x 19.0 mm	3.875 in 98.4 mm	2.125 in 54.0 mm	20ID/32OD	7RMP-S-BPE-0300X0075-PL-6
3 x 1 in 76.2 x 25.4 mm	3.875 in 98.4 mm	2.125 in 54.0 mm	20ID/UNPOL OD	7RMP-S-BPE-0300X0100-PC-6
3 x 1 in 76.2 x 25.4 mm	3.875 in 98.4 mm	2.125 in 54.0 mm	20ID/32OD	7RMP-S-BPE-0300X0100-PL-6
3 x 1.5 in 76.2 x 38.1 mm	3.875 in 98.4 mm	2.125 in 54.0 mm	20ID/UNPOL OD	7RMP-S-BPE-0300X0150-PC-6
3 x 1.5 in 76.2 x 38.1 mm	3.875 in 98.4 mm	2.125 in 54.0 mm	20ID/32OD	7RMP-S-BPE-0300X0150-PL-6

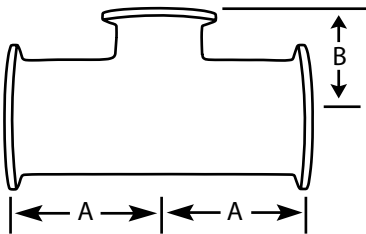


7RMP-S-BPE

Continued

Short Outlet Reducing Tee

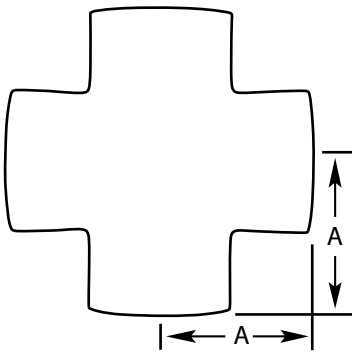
Size	A	B	Surface Finish	316L Item Number
3 x 2 in 76.2 x 50.8 mm	3.875 in 98.4 mm	2.125 in 54.0 mm	20ID/UNPOL OD	7RMP-S-BPE-0300X0200-PC-6
3 x 2 in 76.2 x 50.8 mm	3.875 in 98.4 mm	2.125 in 54.0 mm	20ID/32OD	7RMP-S-BPE-0300X0200-PL-6
4 x .5 in 101.6 x 12.7 mm	4.75 in 120.7 mm	2.625 in 66.7 mm	20ID/UNPOL OD	7RMP-S-BPE-0400X0050-PC-6
4 x .5 in 101.6 x 12.7 mm	4.75 in 120.7 mm	2.625 in 66.7 mm	20ID/32OD	7RMP-S-BPE-0400X0050-PL-6
4 x .75 in 101.6 x 19.0 mm	4.75 in 120.7 mm	2.625 in 66.7 mm	20ID/UNPOL OD	7RMP-S-BPE-0400X0075-PC-6
4 x .75 in 101.6 x 19.0 mm	4.75 in 120.7 mm	2.625 in 66.7 mm	20ID/32OD	7RMP-S-BPE-0400X0075-PL-6
4 x 1 in 101.6 x 25.4 mm	4.75 in 120.7 mm	2.625 in 66.7 mm	20ID/UNPOL OD	7RMP-S-BPE-0400X0100-PC-6
4 x 1 in 101.6 x 25.4 mm	4.75 in 120.7 mm	2.625 in 66.7 mm	20ID/32OD	7RMP-S-BPE-0400X0100-PL-6
4 x 1.5 in 101.6 x 38.1 mm	4.75 in 120.7 mm	2.625 in 66.7 mm	20ID/UNPOL OD	7RMP-S-BPE-0400X0150-PC-6
4 x 1.5 in 101.6 x 38.1 mm	4.75 in 120.7 mm	2.625 in 66.7 mm	20ID/32OD	7RMP-S-BPE-0400X0150-PL-6
4 x 2 in 101.6 x 50.8 mm	4.75 in 120.7 mm	2.625 in 66.7 mm	20ID/UNPOL OD	7RMP-S-BPE-0400X0200-PC-6
4 x 2 in 101.6 x 50.8 mm	4.75 in 120.7 mm	2.625 in 66.7 mm	20ID/32OD	7RMP-S-BPE-0400X0200-PL-6
4 x 2.5 in 101.6 x 63.5 mm	4.75 in 120.7 mm	2.625 in 66.7 mm	20ID/UNPOL OD	7RMP-S-BPE-0400X0250-PC-6
4 x 2.5 in 101.6 x 63.5 mm	4.75 in 120.7 mm	2.625 in 66.7 mm	20ID/32OD	7RMP-S-BPE-0400X0250-PL-6
4 x 3 in 101.6 x 76.2 mm	4.75 in 120.7 mm	2.625 in 66.7 mm	20ID/UNPOL OD	7RMP-S-BPE-0400X0300-PC-6
4 x 3 in 101.6 x 76.2 mm	4.75 in 120.7 mm	2.625 in 66.7 mm	20ID/32OD	7RMP-S-BPE-0400X0300-PL-6



9WWW-BPE

Buttweld Cross

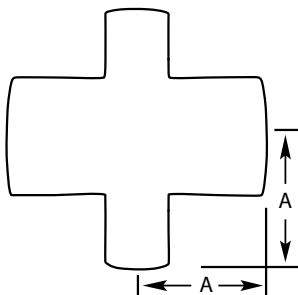
Size	A	Surface Finish	316L Item Number
.5 in 12.7 mm	1.875 in 47.6 mm	20ID/UNPOL OD	9WWW-BPE-0050-PC-6
.5 in 12.7 mm	1.875 in 47.6 mm	20ID/32OD	9WWW-BPE-0050-PL-6
.75 in 19.0 mm	2.00 in 50.8 mm	20ID/UNPOL OD	9WWW-BPE-0075-PC-6
.75 in 19.0 mm	2.00 in 50.8 mm	20ID/32OD	9WWW-BPE-0075-PL-6
1 in 25.4 mm	2.125 in 54.0 mm	20ID/UNPOL OD	9WWW-BPE-0100-PC-6
1 in 25.4 mm	2.125 in 54.0 mm	20ID/32OD	9WWW-BPE-0100-PL-6
1.5 in 38.1 mm	2.375 in 60.3 mm	20ID/UNPOL OD	9WWW-BPE-0150-PC-6
1.5 in 38.1 mm	2.375 in 60.3 mm	20ID/32OD	9WWW-BPE-0150-PL-6
2 in 50.8 mm	2.875 in 73.0 mm	20ID/UNPOL OD	9WWW-BPE-0200-PC-6
2 in 50.8 mm	2.875 in 73.0 mm	20ID/32OD	9WWW-BPE-0200-PL-6
2.5 in 63.5 mm	3.125 in 79.4 mm	20ID/UNPOL OD	9WWW-BPE-0250-PC-6
2.5 in 63.5 mm	3.125 in 79.4 mm	20ID/32OD	9WWW-BPE-0250-PL-6
3 in 76.2 mm	3.375 in 85.7 mm	20ID/UNPOL OD	9WWW-BPE-0300-PC-6
3 in 76.2 mm	3.375 in 85.7 mm	20ID/32OD	9WWW-BPE-0300-PL-6
4 in 101.6 mm	4.125 in 104.8 mm	20ID/UNPOL OD	9WWW-BPE-0400-PC-6
4 in 101.6 mm	4.125 in 104.8 mm	20ID/32OD	9WWW-BPE-0400-PL-6



9RWWW-BPE

Buttweld Reducing Cross

Size	A	B	Surface Finish	316L Item Number
.75 x .5 in 19.0 x 12.7 mm	2.00 in 50.8 mm	2.00 in 50.8 mm	20ID/UNPOL OD	9RWWW-BPE-0075X0050-PC-6
.75 x .5 in 19.0 x 12.7 mm	2.00 in 50.8 mm	2.00 in 50.8 mm	20ID/32OD	9RWWW-BPE-0075X0050-PL-6
1 x .5 in 25.4 x 12.7 mm	2.125 in 54.0 mm	2.125 in 54.0 mm	20ID/UNPOL OD	9RWWW-BPE-0100X0050-PC-6
1 x .5 in 25.4 x 12.7 mm	2.125 in 54.0 mm	2.125 in 54.0 mm	20ID/32OD	9RWWW-BPE-0100X0050-PL-6
1 x .75 in 25.4 x 19.0 mm	2.125 in 54.0 mm	2.125 in 54.0 mm	20ID/UNPOL OD	9RWWW-BPE-0100X0075-PC-6
1 x .75 in 25.4 x 19.0 mm	2.125 in 54.0 mm	2.125 in 54.0 mm	20ID/32OD	9RWWW-BPE-0100X0075-PL-6
1.5 x .5 in 38.1 x 12.7 mm	2.375 in 60.3 mm	2.375 in 60.3 mm	20ID/UNPOL OD	9RWWW-BPE-0150X0050-PC-6
1.5 x .5 in 38.1 x 12.7 mm	2.375 in 60.3 mm	2.375 in 60.3 mm	20ID/32OD	9RWWW-BPE-0150X0050-PL-6
1.5 x .75 in 38.1 x 19.0 mm	2.375 in 60.3 mm	2.375 in 60.3 mm	20ID/UNPOL OD	9RWWW-BPE-0150X0075-PC-6
1.5 x .75 in 38.1 x 19.0 mm	2.375 in 60.3 mm	2.375 in 60.3 mm	20ID/32OD	9RWWW-BPE-0150X0075-PL-6
1.5 x 1 in 38.1 x 25.4 mm	2.375 in 60.3 mm	2.375 in 60.3 mm	20ID/UNPOL OD	9RWWW-BPE-0150X0100-PC-6
1.5 x 1 in 38.1 x 25.4 mm	2.375 in 60.3 mm	2.375 in 60.3 mm	20ID/32OD	9RWWW-BPE-0150X0100-PL-6
2 x .5 in 50.8 x 12.7 mm	2.875 in 73.0 mm	2.625 in 66.7 mm	20ID/UNPOL OD	9RWWW-BPE-0200X0050-PC-6
2 x .5 in 50.8 x 12.7 mm	2.875 in 73.0 mm	2.625 in 66.7 mm	20ID/32OD	9RWWW-BPE-0200X0050-PL-6
2 x .75 in 50.8 x 19.0 mm	2.875 in 73.0 mm	2.625 in 66.7 mm	20ID/UNPOL OD	9RWWW-BPE-0200X0075-PC-6
2 x .75 in 50.8 x 19.0 mm	2.875 in 73.0 mm	2.625 in 66.7 mm	20ID/32OD	9RWWW-BPE-0200X0075-PL-6
2 x 1 in 50.8 x 25.4 mm	2.875 in 73.0 mm	2.625 in 66.7 mm	20ID/UNPOL OD	9RWWW-BPE-0200X0100-PC-6
2 x 1 in 50.8 x 25.4 mm	2.875 in 73.0 mm	2.625 in 66.7 mm	20ID/32OD	9RWWW-BPE-0200X0100-PL-6



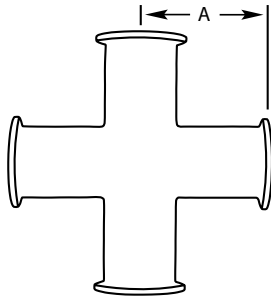
9RWWW-BPE*Continued***Buttweld Reducing Cross**

Size	A	B	Surface Finish	316L Item Number
2 x 1.5 in 50.8 x 38.1 mm	2.875 in 73.0 mm	2.625 in 66.7 mm	20ID/UNPOL OD	9RWWW-BPE-0200X0150-PC-6
2 x 1.5 in 50.8 x 38.1 mm	2.875 in 73.0 mm	2.625 in 66.7 mm	20ID/32OD	9RWWW-BPE-0200X0150-PL-6
2.5 x 1 in 63.5 x 25.4 mm	3.125 in 79.4 mm	2.875 in 73.0 mm	20ID/UNPOL OD	9RWWW-BPE-0250X0100-PC-6
2.5 x 1 in 63.5 x 25.4 mm	3.125 in 79.4 mm	2.875 in 73.0 mm	20ID/32OD	9RWWW-BPE-0250X0100-PL-6
2.5 x 1.5 in 63.5 x 38.1 mm	3.125 in 79.4 mm	2.875 in 73.0 mm	20ID/UNPOL OD	9RWWW-BPE-0250X0150-PC-6
2.5 x 1.5 in 63.5 x 38.1 mm	3.125 in 79.4 mm	2.875 in 73.0 mm	20ID/32OD	9RWWW-BPE-0250X0150-PL-6
2.5 x 2 in 63.5 x 50.8 mm	3.125 in 79.4 mm	2.875 in 73.0 mm	20ID/UNPOL OD	9RWWW-BPE-0250X0200-PC-6
2.5 x 2 in 63.5 x 50.8 mm	3.125 in 79.4 mm	2.875 in 73.0 mm	20ID/32OD	9RWWW-BPE-0250X0200-PL-6
3 x 1 in 76.2 x 25.4 mm	3.375 in 85.7 mm	3.125 in 79.4 mm	20ID/UNPOL OD	9RWWW-BPE-0300X0100-PC-6
3 x 1 in 76.2 x 25.4 mm	3.375 in 85.7 mm	3.125 in 79.4 mm	20ID/32OD	9RWWW-BPE-0300X0100-PL-6
3 x 1.5 in 76.2 x 38.1 mm	3.375 in 85.7 mm	3.125 in 79.4 mm	20ID/UNPOL OD	9RWWW-BPE-0300X0150-PC-6
3 x 1.5 in 76.2 x 38.1 mm	3.375 in 85.7 mm	3.125 in 79.4 mm	20ID/32OD	9RWWW-BPE-0300X0150-PL-6
3 x 2 in 76.2 x 50.8 mm	3.375 in 85.7 mm	3.125 in 79.4 mm	20ID/UNPOL OD	9RWWW-BPE-0300X0200-PC-6
3 x 2 in 76.2 x 50.8 mm	3.375 in 85.7 mm	3.125 in 79.4 mm	20ID/32OD	9RWWW-BPE-0300X0200-PL-6
3 x 2.5 in 76.2 x 63.5 mm	3.375 in 85.7 mm	3.125 in 79.4 mm	20ID/UNPOL OD	9RWWW-BPE-0300X0250-PC-6
3 x 2.5 in 76.2 x 63.5 mm	3.375 in 85.7 mm	3.125 in 79.4 mm	20ID/32OD	9RWWW-BPE-0300X0250-PL-6
4 x 1 in 101.6 x 25.4 mm	4.125 in 104.8 mm	3.625 in 92.1 mm	20ID/UNPOL OD	9RWWW-BPE-0400X0100-PC-6
4 x 1 in 101.6 x 25.4 mm	4.125 in 104.8 mm	3.625 in 92.1 mm	20ID/32OD	9RWWW-BPE-0400X0100-PL-6
4 x 1.5 in 101.6 x 38.1 mm	4.125 in 104.8 mm	3.625 in 92.1 mm	20ID/UNPOL OD	9RWWW-BPE-0400X0150-PC-6
4 x 1.5 in 101.6 x 38.1 mm	4.125 in 104.8 mm	3.625 in 92.1 mm	20ID/32OD	9RWWW-BPE-0400X0150-PL-6
4 x 2 in 101.6 x 50.8 mm	4.125 in 104.8 mm	3.875 in 98.4 mm	20ID/UNPOL OD	9RWWW-BPE-0400X0200-PC-6
4 x 2 in 101.6 x 50.8 mm	4.125 in 104.8 mm	3.875 in 98.4 mm	20ID/32OD	9RWWW-BPE-0400X0200-PL-6

9MP-BPE

Clamp Cross

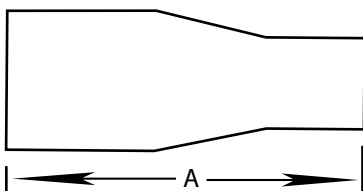
Size	A	Surface Finish	316L Item Number
.5 in 12.7 mm	2.250 in 57.2 mm	20ID/UNPOL OD	9MP-BPE-0050-PC-6
.5 in 12.7 mm	2.250 in 57.2 mm	20ID/32OD	9MP-BPE-0050-PL-6
.75 in 19.0 mm	2.375 in 60.3 mm	20ID/UNPOL OD	9MP-BPE-0075-PC-6
.75 in 19.0 mm	2.375 in 60.3 mm	20ID/32OD	9MP-BPE-0075-PL-6
1 in 25.4 mm	2.625 in 66.7 mm	20ID/UNPOL OD	9MP-BPE-0100-PC-6
1 in 25.4 mm	2.625 in 66.7 mm	20ID/32OD	9MP-BPE-0100-PL-6
1.5 in 38.1 mm	2.875 in 73.0 mm	20ID/UNPOL OD	9MP-BPE-0150-PC-6
1.5 in 38.1 mm	2.875 in 73.0 mm	20ID/32OD	9MP-BPE-0150-PL-6
2 in 50.8 mm	3.375 in 85.7 mm	20ID/UNPOL OD	9MP-BPE-0200-PC-6
2 in 50.8 mm	3.375 in 85.7 mm	20ID/32OD	9MP-BPE-0200-PL-6
2.5 in 63.5 mm	3.625 in 92.1 mm	20ID/UNPOL OD	9MP-BPE-0250-PC-6
2.5 in 63.5 mm	3.625 in 92.1 mm	20ID/32OD	9MP-BPE-0250-PL-6
3 in 76.2 mm	3.875 in 98.4 mm	20ID/UNPOL OD	9MP-BPE-0300-PC-6
3 in 76.2 mm	3.875 in 98.4 mm	20ID/32OD	9MP-BPE-0300-PL-6
4 in 101.6 mm	4.750 in 121.0 mm	20ID/UNPOL OD	9MP-BPE-0400-PC-6
4 in 101.6 mm	4.750 in 121.0 mm	20ID/32OD	9MP-BPE-0400-PL-6
6 in 152.4 mm	7.125 in 181.0 mm	20ID/UNPOL OD	9MP-BPE-0600-PC-6
6 in 152.4 mm	7.125 in 181.0 mm	20ID/32OD	9MP-BPE-0600-PL-6



31W-BPE

Buttweld Concentric Reducer

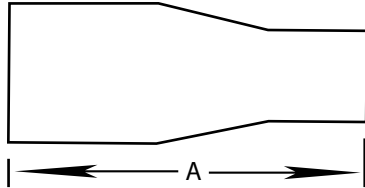
Size	A	Surface Finish	316L Item Number
.75 x .5 in 19.0 x 12.7 mm	4.00 in 101.6 mm	20ID/UNPOL OD	31W-BPE-0075X0050-PC-6
.75 x .5 in 19.0 x 12.7 mm	4.00 in 101.6 mm	20ID/32OD	31W-BPE-0075X0050-PL-6
1 x .5 in 25.4 x 12.7 mm	4.50 in 114.3 mm	20ID/UNPOL OD	31W-BPE-0100X0050-PC-6
1 x .5 in 25.4 x 12.7 mm	4.50 in 114.3 mm	20ID/32OD	31W-BPE-0100X0050-PL-6
1 x .75 in 25.4 x 19.0 mm	4.00 in 101.6 mm	20ID/UNPOL OD	31W-BPE-0100X0075-PC-6
1 x .75 in 25.4 x 19.0 mm	4.00 in 101.6 mm	20ID/32OD	31W-BPE-0100X0075-PL-6
1.5 x .5 in 38.1 x 12.7 mm	5.50 in 139.7 mm	20ID/UNPOL OD	31W-BPE-0150X0050-PC-6
1.5 x .5 in 38.1 x 12.7 mm	5.50 in 139.7 mm	20ID/32OD	31W-BPE-0150X0050-PL-6
1.5 x .75 in 38.1 x 19.0 mm	5.00 in 127.0 mm	20ID/UNPOL OD	31W-BPE-0150X0075-PC-6
1.5 x .75 in 38.1 x 19.0 mm	5.00 in 127.0 mm	20ID/32OD	31W-BPE-0150X0075-PL-6
1.5 x 1 in 38.1 x 25.4 mm	5.00 in 127.0 mm	20ID/UNPOL OD	31W-BPE-0150X0100-PC-6
1.5 x 1 in 38.1 x 25.4 mm	5.00 in 127.0 mm	20ID/32OD	31W-BPE-0150X0100-PL-6
2 x .5 in 50.8 x 12.7 mm	7.75 in 196.9 mm	20ID/UNPOL OD	31W-BPE-0200X0050-PC-6
2 x .5 in 50.8 x 12.7 mm	7.75 in 196.9 mm	20ID/32OD	31W-BPE-0200X0050-PL-6
2 x .75 in 50.8 x 19.0 mm	7.25 in 184.2 mm	20ID/UNPOL OD	31W-BPE-0200X0075-PC-6
2 x .75 in 50.8 x 19.0 mm	7.25 in 184.2 mm	20ID/32OD	31W-BPE-0200X0075-PL-6
2 x 1 in 50.8 x 25.4 mm	7.25 in 184.2 mm	20ID/UNPOL OD	31W-BPE-0200X0100-PC-6
2 x 1 in 50.8 x 25.4 mm	7.25 in 184.2 mm	20ID/32OD	31W-BPE-0200X0100-PL-6
2 x 1.5 in 50.8 x 38.1 mm	5.25 in 133.4 mm	20ID/UNPOL OD	31W-BPE-0200X0150-PC-6
2 x 1.5 in 50.8 x 38.1 mm	5.25 in 133.4 mm	20ID/32OD	31W-BPE-0200X0150-PL-6
2.5 x .5 in 63.5 x 12.7 mm	9.75 in 247.7 mm	20ID/UNPOL OD	31W-BPE-0250X0050-PC-6
2.5 x .5 in 63.5 x 12.7 mm	9.75 in 247.7 mm	20ID/32OD	31W-BPE-0250X0050-PL-6
2.5 x .75 in 63.5 x 19.0 mm	9.25 in 235.0 mm	20ID/UNPOL OD	31W-BPE-0250X0075-PC-6
2.5 x .75 in 63.5 x 19.0 mm	9.25 in 235.0 mm	20ID/32OD	31W-BPE-0250X0075-PL-6
2.5 x 1 in 63.5 x 25.4 mm	9.25 in 235.0 mm	20ID/UNPOL OD	31W-BPE-0250X0100-PC-6
2.5 x 1 in 63.5 x 25.4 mm	9.25 in 235.0 mm	20ID/32OD	31W-BPE-0250X0100-PL-6
2.5 x 1.5 in 63.5 x 38.1 mm	7.25 in 190.5 mm	20ID/UNPOL OD	31W-BPE-0250X0150-PC-6
2.5 x 1.5 in 63.5 x 38.1 mm	7.25 in 190.5 mm	20ID/32OD	31W-BPE-0250X0150-PL-6
2.5 x 2 in 63.5 x 50.8 mm	5.50 in 139.7 mm	20ID/UNPOL OD	31W-BPE-0250X0200-PC-6
2.5 x 2 in 63.5 x 50.8 mm	5.50 in 139.7 mm	20ID/32OD	31W-BPE-0250X0200-PL-6
3 x 1 in 76.2 x 25.4 mm	11.25 in 285.8 mm	20ID/UNPOL OD	31W-BPE-0300X0100-PC-6
3 x 1 in 76.2 x 25.4 mm	11.25 in 285.8 mm	20ID/32OD	31W-BPE-0300X0100-PL-6
3 x 1.5 in 76.2 x 38.1 mm	9.25 in 235.0 mm	20ID/UNPOL OD	31W-BPE-0300X0150-PC-6
3 x 1.5 in 76.2 x 38.1 mm	9.25 in 235.0 mm	20ID/32OD	31W-BPE-0300X0150-PL-6



31W-BPE
Continued

Buttweld Concentric Reducer

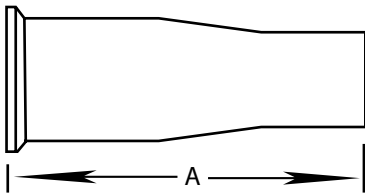
Size	A	Surface Finish	316L Item Number
3 x 2 in 76.2 x 50.8 mm	7.50 in 190.5 mm	20ID/UNPOL OD	31W-BPE-0300X0200-PC-6
3 x 2 in 76.2 x 50.8 mm	7.50 in 190.5 mm	20ID/32OD	31W-BPE-0300X0200-PL-6
3 x 2.5 in 76.2 x 63.5 mm	5.50 in 139.7 mm	20ID/UNPOL OD	31W-BPE-0300X0250-PC-6
3 x 2.5 in 76.2 x 63.5 mm	5.50 in 139.7 mm	20ID/32OD	31W-BPE-0300X0250-PL-6
4 x 1 in 101.6 x 25.4 mm	15.50 in 393.7 mm	20ID/UNPOL OD	31W-BPE-0400X0100-PC-6
4 x 1 in 101.6 x 25.4 mm	15.50 in 393.7 mm	20ID/32OD	31W-BPE-0400X0100-PL-6
4 x 2 in 101.6 x 50.8 mm	11.75 in 298.5 mm	20ID/UNPOL OD	31W-BPE-0400X0200-PC-6
4 x 2 in 101.6 x 50.8 mm	11.75 in 298.5 mm	20ID/32OD	31W-BPE-0400X0200-PL-6
4 x 2.5 in 101.6 x 63.5 mm	9.75 in 247.7 mm	20ID/UNPOL OD	31W-BPE-0400X0250-PC-6
4 x 2.5 in 101.6 x 63.5 mm	9.75 in 247.7 mm	20ID/32OD	31W-BPE-0400X0250-PL-6
4 x 3 in 101.6 x 76.2 mm	7.75 in 196.9 mm	20ID/UNPOL OD	31W-BPE-0400X0300-PC-6
4 x 3 in 101.6 x 76.2 mm	7.75 in 196.9 mm	20ID/32OD	31W-BPE-0400X0300-PL-6



31M-BPE

Clamp x Weld Concentric Reducer

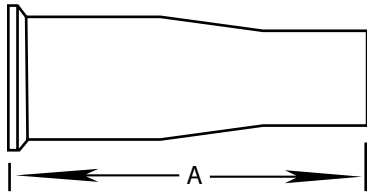
Size	A	Surface Finish	316L Item Number
.75 x .5 in 19.0 x 12.7 mm	3.00 in 76.2 mm	20ID/UNPOL OD	31M-BPE-0075X0050-PC-6
.75 x .5 in 19.0 x 12.7 mm	3.00 in 76.2 mm	20ID/32OD	31M-BPE-0075X0050-PL-6
1 x .5 in 25.4 x 12.7 mm	3.50 in 88.9 mm	20ID/UNPOL OD	31M-BPE-0100X0050-PC-6
1 x .5 in 25.4 x 12.7 mm	3.50 in 88.9 mm	20ID/32OD	31M-BPE-0100X0050-PL-6
1 x .75 in 25.4 x 19.0 mm	3.00 in 76.2 mm	20ID/UNPOL OD	31M-BPE-0100X0075-PC-6
1 x .75 in 25.4 x 19.0 mm	3.00 in 76.2 mm	20ID/32OD	31M-BPE-0100X0075-PL-6
1.5 x .5 in 38.1 x 12.7 mm	4.50 in 114.3 mm	20ID/UNPOL OD	31M-BPE-0150X0050-PC-6
1.5 x .5 in 38.1 x 12.7 mm	4.50 in 114.3 mm	20ID/32OD	31M-BPE-0150X0050-PL-6
1.5 x .75 in 38.1 x 19.0 mm	4.00 in 101.6 mm	20ID/UNPOL OD	31M-BPE-0150X0075-PC-6
1.5 x .75 in 38.1 x 19.0 mm	4.00 in 101.6 mm	20ID/32OD	31M-BPE-0150X0075-PL-6
1.5 x 1 in 38.1 x 25.4 mm	4.00 in 101.6 mm	20ID/UNPOL OD	31M-BPE-0150X0100-PC-6
1.5 x 1 in 38.1 x 25.4 mm	4.00 in 101.6 mm	20ID/32OD	31M-BPE-0150X0100-PL-6
2 x .5 in 50.8 x 12.7 mm	6.50 in 161.5 mm	20ID/UNPOL OD	31M-BPE-0200X0050-PC-6
2 x .5 in 50.8 x 12.7 mm	6.50 in 161.5 mm	20ID/32OD	31M-BPE-0200X0050-PL-6
2 x .75 in 50.8 x 19.0 mm	6.00 in 152.4 mm	20ID/UNPOL OD	31M-BPE-0200X0075-PC-6
2 x .75 in 50.8 x 19.0 mm	6.00 in 152.4 mm	20ID/32OD	31M-BPE-0200X0075-PL-6
2 x 1 in 50.8 x 25.4 mm	6.00 in 152.4 mm	20ID/UNPOL OD	31M-BPE-0200X0100-PC-6
2 x 1 in 50.8 x 25.4 mm	6.00 in 152.4 mm	20ID/32OD	31M-BPE-0200X0100-PL-6
2 x 1.5 in 50.8 x 38.1 mm	4.00 in 101.6 mm	20ID/UNPOL OD	31M-BPE-0200X0150-PC-6
2 x 1.5 in 50.8 x 38.1 mm	4.00 in 101.6 mm	20ID/32OD	31M-BPE-0200X0150-PL-6
2.5 x .5 in 63.5 x 12.7 mm	8.50 in 215.9 mm	20ID/UNPOL OD	31M-BPE-0250X0050-PC-6
2.5 x .5 in 63.5 x 12.7 mm	8.50 in 215.9 mm	20ID/32OD	31M-BPE-0250X0050-PL-6
2.5 x .75 in 63.5 x 19.0 mm	8.00 in 203.2 mm	20ID/UNPOL OD	31M-BPE-0250X0075-PC-6



31M-BPE
Continued

Clamp x Weld Concentric Reducer

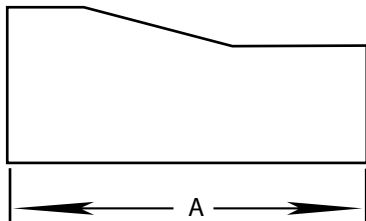
Size	A	Surface Finish	316L Item Number
2.5 x .75 in 63.5 x 19.0 mm	8.00 in 203.2 mm	20ID/32OD	31M-BPE-0250X0075-PL-6
2.5 x 1 in 63.5 x 25.4 mm	8.00 in 203.2 mm	20ID/UNPOL OD	31M-BPE-0250X0100-PC-6
2.5 x 1 in 63.5 x 25.4 mm	8.00 in 203.2 mm	20ID/32OD	31M-BPE-0250X0100-PL-6
2.5 x 1.5 in 63.5 x 38.1 mm	6.00 in 152.4 mm	20ID/UNPOL OD	31M-BPE-0250X0150-PC-6
2.5 x 1.5 in 63.5 x 38.1 mm	6.00 in 152.4 mm	20ID/32OD	31M-BPE-0250X0150-PL-6
2.5 x 2 in 63.5 x 50.8 mm	4.25 in 108.0 mm	20ID/UNPOL OD	31M-BPE-0250X0200-PC-6
2.5 x 2 in 63.5 x 50.8 mm	4.25 in 108.0 mm	20ID/32OD	31M-BPE-0250X0200-PL-6
3 x 1 in 76.2 x 25.4 mm	10.00 in 254.0 mm	20ID/UNPOL OD	31M-BPE-0300X0100-PC-6
3 x 1 in 76.2 x 25.4 mm	10.00 in 254.0 mm	20ID/32OD	31M-BPE-0300X0100-PL-6
3 x 1.5 in 76.2 x 38.1 mm	8.00 in 203.2 mm	20ID/UNPOL OD	31M-BPE-0300X0150-PC-6
3 x 1.5 in 76.2 x 38.1 mm	8.00 in 203.2 mm	20ID/32OD	31M-BPE-0300X0150-PL-6
3 x 2 in 76.2 x 50.8 mm	6.25 in 158.8 mm	20ID/UNPOL OD	31M-BPE-0300X0200-PC-6
3 x 2 in 76.2 x 50.8 mm	6.25 in 158.8 mm	20ID/32OD	31M-BPE-0300X0200-PL-6
3 x 2.5 in 76.2 x 63.5 mm	4.25 in 108.0 mm	20ID/UNPOL OD	31M-BPE-0300X0250-PC-6
3 x 2.5 in 76.2 x 63.5 mm	4.25 in 108.0 mm	20ID/32OD	31M-BPE-0300X0250-PL-6
4 x 1 in 101.6 x 25.4 mm	14.125 in 358.8 mm	20ID/UNPOL OD	31M-BPE-0400X0100-PC-6
4 x 1 in 101.6 x 25.4 mm	14.125 in 358.8 mm	20ID/32OD	31M-BPE-0400X0100-PL-6
4 x 2 in 101.6 x 50.8 mm	10.375 in 263.5 mm	20ID/UNPOL OD	31M-BPE-0400X0200-PC-6
4 x 2 in 101.6 x 50.8 mm	10.375 in 263.5 mm	20ID/32OD	31M-BPE-0400X0200-PL-6
4 x 2.5 in 101.6 x 63.5 mm	8.375 in 212.70 mm	20ID/UNPOL OD	31M-BPE-0400X0250-PC-6
4 x 2.5 in 101.6 x 63.5 mm	8.375 in 212.70 mm	20ID/32OD	31M-BPE-0400X0250-PL-6
4 x 3 in 101.6 x 76.2 mm	6.375 in 161.9 mm	20ID/UNPOL OD	31M-BPE-0400X0300-PC-6
4 x 3 in 101.6 x 76.2 mm	6.375 in 161.9 mm	20ID/32OD	31M-BPE-0400X0300-PL-6



32W-BPE

Buttweld Eccentric Reducers

Size	A	Surface Finish	316L Item Number
.75 x .5 in 19.0 x 12.7 mm	4.00 in 101.6 mm	20ID/UNPOL OD	32W-BPE-0075X0050-PC-6
.75 x .5 in 19.0 x 12.7 mm	4.00 in 101.6 mm	20ID/32OD	32W-BPE-0075X0050-PL-6
1 x .5 in 25.4 x 12.7 mm	4.50 in 114.3 mm	20ID/UNPOL OD	32W-BPE-0100X0050-PC-6
1 x .5 in 25.4 x 12.7 mm	4.50 in 114.3 mm	20ID/32OD	32W-BPE-0100X0050-PL-6
1 x .75 in 25.4 x 19.0 mm	4.00 in 101.6 mm	20ID/UNPOL OD	32W-BPE-0100X0075-PC-6
1 x .75 in 25.4 x 19.0 mm	4.00 in 101.6 mm	20ID/32OD	32W-BPE-0100X0075-PL-6
1.5 x .5 in 38.1 x 12.7 mm	5.50 in 139.7 mm	20ID/UNPOL OD	32W-BPE-0150X0050-PC-6
1.5 x .5 in 38.1 x 12.7 mm	5.50 in 139.7 mm	20ID/32OD	32W-BPE-0150X0050-PL-6
1.5 x .75 in 38.1 x 19.0 mm	5.00 in 127.0 mm	20ID/UNPOL OD	32W-BPE-0150X0075-PC-6
1.5 x .75 in 38.1 x 19.0 mm	5.00 in 127.0 mm	20ID/32OD	32W-BPE-0150X0075-PL-6
1.5 x 1 in 38.1 x 25.4 mm	5.00 in 127.0 mm	20ID/UNPOL OD	32W-BPE-0150X0100-PC-6
1.5 x 1 in 38.1 x 25.4 mm	5.00 in 127.0 mm	20ID/32OD	32W-BPE-0150X0100-PL-6
2 x .5 in 50.8 x 12.7 mm	7.75 in 196.9 mm	20ID/UNPOL OD	32W-BPE-0200X0050-PC-6
2 x .5 in 50.8 x 12.7 mm	7.75 in 196.9 mm	20ID/32OD	32W-BPE-0200X0050-PL-6
2 x .75 in 50.8 x 19.0 mm	7.25 in 184.2 mm	20ID/UNPOL OD	32W-BPE-0200X0075-PC-6
2 x .75 in 50.8 x 19.0 mm	7.25 in 184.2 mm	20ID/32OD	32W-BPE-0200X0075-PL-6
2 x 1 in 50.8 x 25.4 mm	7.25 in 184.2 mm	20ID/UNPOL OD	32W-BPE-0200X0100-PC-6
2 x 1 in 50.8 x 25.4 mm	7.25 in 184.2 mm	20ID/32OD	32W-BPE-0200X0100-PL-6
2 x 1.5 in 50.8 x 38.1 mm	5.25 in 133.4 mm	20ID/UNPOL OD	32W-BPE-0200X0150-PC-6
2 x 1.5 in 50.8 x 38.1 mm	5.25 in 133.4 mm	20ID/32OD	32W-BPE-0200X0150-PL-6
2.5 x .5 in 63.5 x 12.7 mm	9.75 in 247.7 mm	20ID/UNPOL OD	32W-BPE-0250X0050-PC-6
2.5 x .5 in 63.5 x 12.7 mm	9.75 in 247.7 mm	20ID/32OD	32W-BPE-0250X0050-PL-6
2.5 x .75 in 63.5 x 19.0 mm	9.25 in 235.0 mm	20ID/UNPOL OD	32W-BPE-0250X0075-PC-6
2.5 x .75 in 63.5 x 19.0 mm	9.25 in 235.0 mm	20ID/32OD	32W-BPE-0250X0075-PL-6

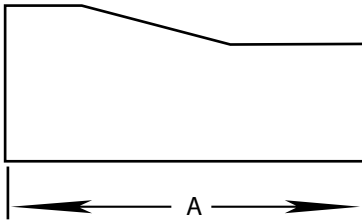


32W-BPE

Continued

Buttweld Eccentric Reducers

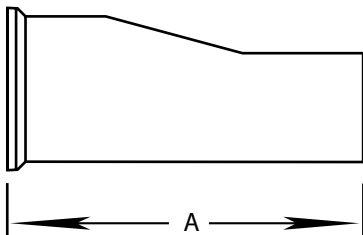
Size	A	Surface Finish	316L Item Number
2.5 x 1 in 63.5 x 25.4 mm	9.25 in 235.0 mm	20ID/UNPOL OD	32W-BPE-0250X0100-PC-6
2.5 x 1 in 63.5 x 25.4 mm	9.25 in 235.0 mm	20ID/32OD	32W-BPE-0250X0100-PL-6
2.5 x 1.5 in 63.5 x 38.1 mm	7.50 in 190.5 mm	20ID/UNPOL OD	32W-BPE-0250X0150-PC-6
2.5 x 1.5 in 63.5 x 38.1 mm	7.50 in 190.5 mm	20ID/32OD	32W-BPE-0250X0150-PL-6
2.5 x 2 in 63.5 x 50.8 mm	5.50 in 139.7 mm	20ID/UNPOL OD	32W-BPE-0250X0200-PC-6
2.5 x 2 in 63.5 x 50.8 mm	5.50 in 139.7 mm	20ID/32OD	32W-BPE-0250X0200-PL-6
3 x 1 in 76.2 x 25.4 mm	11.25 in 285.8 mm	20ID/UNPOL OD	32W-BPE-0300X0100-PC-6
3 x 1 in 76.2 x 25.4 mm	11.25 in 285.8 mm	20ID/32OD	32W-BPE-0300X0100-PL-6
3 x 1.5 in 76.2 x 38.1 mm	9.25 in 235.0 mm	20ID/UNPOL OD	32W-BPE-0300X0150-PC-6
3 x 1.5 in 76.2 x 38.1 mm	9.25 in 235.0 mm	20ID/32OD	32W-BPE-0300X0150-PL-6
3 x 2 in 76.2 x 50.8 mm	7.50 in 190.5 mm	20ID/UNPOL OD	32W-BPE-0300X0200-PC-6
3 x 2 in 76.2 x 50.8 mm	7.50 in 190.5 mm	20ID/32OD	32W-BPE-0300X0200-PL-6
3 x 2.5 in 76.2 x 63.5 mm	5.50 in 139.7 mm	20ID/UNPOL OD	32W-BPE-0300X0250-PC-6
3 x 2.5 in 76.2 x 63.5 mm	5.50 in 139.7 mm	20ID/32OD	32W-BPE-0300X0250-PL-6
4 x 1 in 101.6 x 25.4 mm	15.50 in 393.7 mm	20ID/UNPOL OD	32W-BPE-0400X0100-PC-6
4 x 1 in 101.6 x 25.4 mm	15.50 in 393.7 mm	20ID/32OD	32W-BPE-0400X0100-PL-6
4 x 1.5 in 101.6 x 38.1 mm	13.50 in 342.9 mm	20ID/UNPOL OD	32W-BPE-0400X0150-PC-6
4 x 1.5 in 101.6 x 38.1 mm	13.50 in 342.9 mm	20ID/32OD	32W-BPE-0400X0150-PL-6
4 x 2 in 101.6 x 50.8 mm	11.75 in 298.5 mm	20ID/UNPOL OD	32W-BPE-0400X0200-PC-6
4 x 2 in 101.6 x 50.8 mm	11.75 in 298.5 mm	20ID/32OD	32W-BPE-0400X0200-PL-6
4 x 2.5 in 101.6 x 63.5 mm	9.75 in 247.7 mm	20ID/UNPOL OD	32W-BPE-0400X0250-PC-6
4 x 2.5 in 101.6 x 63.5 mm	9.75 in 247.7 mm	20ID/32OD	32W-BPE-0400X0250-PL-6
4 x 3 in 101.6 x 76.2 mm	7.75 in 196.9 mm	20ID/UNPOL OD	32W-BPE-0400X0300-PC-6
4 x 3 in 101.6 x 76.2 mm	7.75 in 196.9 mm	20ID/32OD	32W-BPE-0400X0300-PL-6



32M-BPE

Clamp x Weld Eccentric Reducer

Size	A	Surface Finish	316L Item Number
.75 x .5 in 19.0 x 12.7 mm	3.00 in 76.2 mm	20ID/UNPOL OD	32M-BPE-0075X0050-PC-6
.75 x .5 in 19.0 x 12.7 mm	3.00 in 76.2 mm	20ID/32OD	32M-BPE-0075X0050-PL-6
1 x .5 in 25.4 x 12.7 mm	3.50 in 88.9 mm	20ID/UNPOL OD	32M-BPE-0100X0050-PC-6
1 x .5 in 25.4 x 12.7 mm	3.50 in 88.9 mm	20ID/32OD	32M-BPE-0100X0050-PL-6
1 x .75 in 25.4 x 19.0 mm	3.00 in 76.2 mm	20ID/UNPOL OD	32M-BPE-0100X0075-PC-6
1 x .75 in 25.4 x 19.0 mm	3.00 in 76.2 mm	20ID/32OD	32M-BPE-0100X0075-PL-6
1.5 x .5 in 38.1 x 12.7 mm	4.50 in 114.3 mm	20ID/UNPOL OD	32M-BPE-0150X0050-PC-6
1.5 x .5 in 38.1 x 12.7 mm	4.50 in 114.3 mm	20ID/32OD	32M-BPE-0150X0050-PL-6
1.5 x .75 in 38.1 x 19.0 mm	4.00 in 101.6 mm	20ID/UNPOL OD	32M-BPE-0150X0075-PC-6
1.5 x .75 in 38.1 x 19.0 mm	4.00 in 101.6 mm	20ID/32OD	32M-BPE-0150X0075-PL-6
1.5 x 1 in 38.1 x 25.4 mm	4.00 in 101.6 mm	20ID/UNPOL OD	32M-BPE-0150X0100-PC-6
1.5 x 1 in 38.1 x 25.4 mm	4.00 in 101.6 mm	20ID/32OD	32M-BPE-0150X0100-PL-6
2 x .5 in 50.8 x 12.7 mm	6.50 in 165.1 mm	20ID/UNPOL OD	32M-BPE-0200X0050-PC-6
2 x .5 in 50.8 x 12.7 mm	6.50 in 165.1 mm	20ID/32OD	32M-BPE-0200X0050-PL-6
2 x .75 in 50.8 x 19.0 mm	6.00 in 152.4 mm	20ID/UNPOL OD	32M-BPE-0200X0075-PC-6
2 x .75 in 50.8 x 19.0 mm	6.00 in 152.4 mm	20ID/32OD	32M-BPE-0200X0075-PL-6
2 x 1 in 50.8 x 25.4 mm	6.00 in 152.4 mm	20ID/UNPOL OD	32M-BPE-0200X0100-PC-6
2 x 1 in 50.8 x 25.4 mm	6.00 in 152.4 mm	20ID/32OD	32M-BPE-0200X0100-PL-6
2 x 1.5 in 50.8 x 38.1 mm	4.00 in 101.6 mm	20ID/UNPOL OD	32M-BPE-0200X0150-PC-6
2 x 1.5 in 50.8 x 38.1 mm	4.00 in 101.6 mm	20ID/32OD	32M-BPE-0200X0150-PL-6
2.5 x .5 in 63.5 x 12.7 mm	8.50 in 215.9 mm	20ID/UNPOL OD	32M-BPE-0250X0050-PC-6
2.5 x .5 in 63.5 x 12.7 mm	8.50 in 215.9 mm	20ID/32OD	32M-BPE-0250X0050-PL-6
2.5 x .75 in 63.5 x 19.0 mm	8.00 in 203.2 mm	20ID/UNPOL OD	32M-BPE-0250X0075-PC-6
2.5 x .75 in 63.5 x 19.0 mm	8.00 in 203.2 mm	20ID/32OD	32M-BPE-0250X0075-PL-6

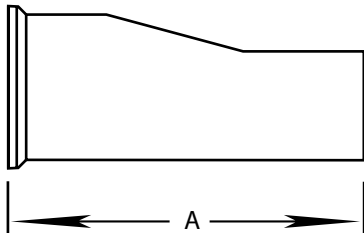


32M-BPE

Continued

Clamp x Weld Eccentric Reducer

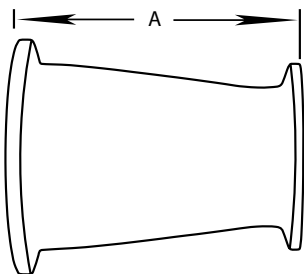
Size	A	Surface Finish	316L Item Number
2.5 x 1 in 63.5 x 25.4 mm	8.00 in 203.2 mm	20ID/UNPOL OD	32M-BPE-0250X0100-PC-6
2.5 x 1 in 63.5 x 25.4 mm	8.00 in 203.2 mm	20ID/32OD	32M-BPE-0250X0100-PL-6
2.5 x 1.5 in 63.5 x 38.1 mm	6.00 in 152.4 mm	20ID/UNPOL OD	32M-BPE-0250X0150-PC-6
2.5 x 1.5 in 63.5 x 38.1 mm	6.00 in 152.4 mm	20ID/32OD	32M-BPE-0250X0150-PL-6
2.5 x 2 in 63.5 x 50.8 mm	4.25 in 108.0 mm	20ID/UNPOL OD	32M-BPE-0250X0200-PC-6
2.5 x 2 in 63.5 x 50.8 mm	4.25 in 108.0 mm	20ID/32OD	32M-BPE-0250X0200-PL-6
3 x 1 in 76.2 x 25.4 mm	10.00 in 254.0 mm	20ID/UNPOL OD	32M-BPE-0300X0100-PC-6
3 x 1 in 76.2 x 25.4 mm	10.00 in 254.0 mm	20ID/32OD	32M-BPE-0300X0100-PL-6
3 x 1.5 in 76.2 x 38.1 mm	8.00 in 203.2 mm	20ID/UNPOL OD	32M-BPE-0300X0150-PC-6
3 x 1.5 in 76.2 x 38.1 mm	8.00 in 203.2 mm	20ID/32OD	32M-BPE-0300X0150-PL-6
3 x 2 in 76.2 x 50.8 mm	6.25 in 158.8 mm	20ID/UNPOL OD	32M-BPE-0300X0200-PC-6
3 x 2 in 76.2 x 50.8 mm	6.25 in 158.8 mm	20ID/32OD	32M-BPE-0300X0200-PL-6
3 x 2.5 in 76.2 x 63.5 mm	4.25 in 108.0 mm	20ID/UNPOL OD	32M-BPE-0300X0250-PC-6
3 x 2.5 in 76.2 x 63.5 mm	4.25 in 108.0 mm	20ID/32OD	32M-BPE-0300X0250-PL-6
4 x 1 in 101.6 x 25.4 mm	14.125 in 358.8 mm	20ID/UNPOL OD	32M-BPE-0400X0100-PC-6
4 x 1 in 101.6 x 25.4 mm	14.125 in 358.8 mm	20ID/32OD	32M-BPE-0400X0100-PL-6
4 x 2 in 101.6 x 50.8 mm	10.375 in 263.5 mm	20ID/UNPOL OD	32M-BPE-0400X0200-PC-6
4 x 2 in 101.6 x 50.8 mm	10.375 in 263.5 mm	20ID/32OD	32M-BPE-0400X0200-PL-6
4 x 2.5 in 101.6 x 63.5 mm	8.375 in 212.70 mm	20ID/UNPOL OD	32M-BPE-0400X0250-PC -6
4 x 2.5 in 101.6 x 63.5 mm	8.375 in 212.70 mm	20ID/32OD	32M-BPE-0400X0250-PL-6
4 x 3 in 101.6 x 76.2 mm	6.375 in 161.9 mm	20ID/UNPOL OD	32M-BPE-0400X0300-PC-6
4 x 3 in 101.6 x 76.2 mm	6.375 in 161.9 mm	20ID/32OD	32M-BPE-0400X0300-PL-6



3114MP-BPE

Clamp Concentric Reducers

Size	A	Surface Finish	316L Item Number
.75 x .5 in 19.0 x 12.7 mm	2.00 in 50.8 mm	20ID/UNPOL OD	3114MP-BPE-0075X0050-PC-6
.75 x .5 in 19.0 x 12.7 mm	2.00 in 50.8 mm	20ID/32OD	3114MP-BPE-0075X0050-PL-6
1 x .5 in 25.4 x 12.7 mm	2.50 in 63.5 mm	20ID/UNPOL OD	3114MP-BPE-0100X0050-PC-6
1 x .5 in 25.4 x 12.7 mm	2.50 in 63.5 mm	20ID/32OD	3114MP-BPE-0100X0050-PL-6
1 x .75 in 25.4 x 19.0 mm	2.00 in 50.8 mm	20ID/UNPOL OD	3114MP-BPE-0100X0075-PC-6
1 x .75 in 25.4 x 19.0 mm	2.00 in 50.8 mm	20ID/32OD	3114MP-BPE-0100X0075-PL-6
1.5 x .5 in 38.1 x 12.7 mm	3.50 in 88.9 mm	20ID/UNPOL OD	3114MP-BPE-0150X0050-PC-6
1.5 x .5 in 38.1 x 12.7 mm	3.50 in 88.9 mm	20ID/32OD	3114MP-BPE-0150X0050-PL-6
1.5 x .75 in 38.1 x 19.0 mm	3.00 in 76.2 mm	20ID/UNPOL OD	3114MP-BPE-0150X0075-PC-6
1.5 x .75 in 38.1 x 19.0 mm	3.00 in 76.2 mm	20ID/32OD	3114MP-BPE-0150X0075-PL-6
1.5 x 1 in 38.1 x 25.4 mm	3.00 in 76.2 mm	20ID/UNPOL OD	3114MP-BPE-0150X0100-PC-6
1.5 x 1 in 38.1 x 25.4 mm	3.00 in 76.2 mm	20ID/32OD	3114MP-BPE-0150X0100-PL-6
2 x .5 in 50.8 x 12.7 mm	5.50 in 139.7 mm	20ID/UNPOL OD	3114MP-BPE-0200X0050-PC-6
2 x .5 in 50.8 x 12.7 mm	5.50 in 139.7 mm	20ID/32OD	3114MP-BPE-0200X0050-PL-6
2 x .75 in 50.8 x 19.0 mm	5.00 in 127.0 mm	20ID/UNPOL OD	3114MP-BPE-0200X0075-PC-6
2 x .75 in 50.8 x 19.0 mm	5.00 in 127.0 mm	20ID/32OD	3114MP-BPE-0200X0075-PL-6
2 x 1 in 50.8 x 25.4 mm	5.00 in 127.0 mm	20ID/UNPOL OD	3114MP-BPE-0200X0100-PC-6
2 x 1 in 50.8 x 25.4 mm	5.00 in 127.0 mm	20ID/32OD	3114MP-BPE-0200X0100-PL-6
2 x 1.5 in 50.8 x 38.1 mm	3.00 in 76.2 mm	20ID/UNPOL OD	3114MP-BPE-0200X0150-PC-6
2 x 1.5 in 50.8 x 38.1 mm	3.00 in 76.2 mm	20ID/32OD	3114MP-BPE-0200X0150-PL-6
2.5 x .5 in 63.5 x 12.7 mm	7.50 in 190.5 mm	20ID/UNPOL OD	3114MP-BPE-0250X0050-PC-6
2.5 x .5 in 63.5 x 12.7 mm	7.50 in 190.5 mm	20ID/32OD	3114MP-BPE-0250X0050-PL-6
2.5 x .75 in 63.5 x 19.0 mm	7.00 in 177.8 mm	20ID/UNPOL OD	3114MP-BPE-0250X0075-PC-6
2.5 x .75 in 63.5 x 19.0 mm	7.00 in 177.8 mm	20ID/32OD	3114MP-BPE-0250X0075-PL-6

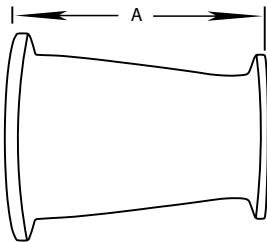


3114MP-BPE

Continued

Clamp Concentric Reducers

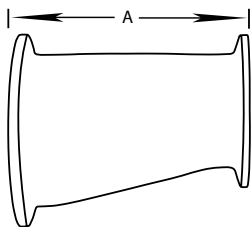
Size	A	Surface Finish	316L Item Number
2.5 x 1 in 63.5 x 25.4 mm	7.00 in 177.8 mm	20ID/UNPOL OD	3114MP-BPE-0250X0100-PC-6
2.5 x 1 in 63.5 x 25.4 mm	7.00 in 177.8 mm	20ID/32OD	3114MP-BPE-0250X0100-PL-6
2.5 x 1.5 in 63.5 x 38.1 mm	5.00 in 127.0 mm	20ID/UNPOL OD	3114MP-BPE-0250X0150-PC-6
2.5 x 1.5 in 63.5 x 38.1 mm	5.00 in 127.0 mm	20ID/32OD	3114MP-BPE-0250X0150-PL-6
2.5 x 2 in 63.5 x 50.8 mm	3.00 in 76.2 mm	20ID/UNPOL OD	3114MP-BPE-0250X0200-PC-6
2.5 x 2 in 63.5 x 50.8 mm	3.00 in 76.2 mm	20ID/32OD	3114MP-BPE-0250X0200-PL-6
3 x 1 in 76.2 x 25.4 mm	9.00 in 228.6 mm	20ID/UNPOL OD	3114MP-BPE-0300X0100-PC-6
3 x 1 in 76.2 x 25.4 mm	9.00 in 228.6 mm	20ID/32OD	3114MP-BPE-0300X0100-PL-6
3 x 1.5 in 76.2 x 38.1 mm	7.00 in 177.8 mm	20ID/UNPOL OD	3114MP-BPE-0300X0150-PC-6
3 x 1.5 in 76.2 x 38.1 mm	7.00 in 177.8 mm	20ID/32OD	3114MP-BPE-0300X0150-PL-6
3 x 2 in 76.2 x 50.8 mm	5.00 in 127.0 mm	20ID/UNPOL OD	3114MP-BPE-0300X0200-PC-6
3 x 2 in 76.2 x 50.8 mm	5.00 in 127.0 mm	20ID/32OD	3114MP-BPE-0300X0200-PL-6
3 x 2.5 in 76.2 x 63.5 mm	3.00 in 76.2 mm	20ID/UNPOL OD	3114MP-BPE-0300X0250-PC-6
3 x 2.5 in 76.2 x 63.5 mm	3.00 in 76.2 mm	20ID/32OD	3114MP-BPE-0300X0250-PL-6
4 x 1 in 101.6 x 25.4 mm	13.125 in 333.4 mm	20ID/UNPOL OD	3114MP-BPE-0400X0100-PC-6
4 x 1 in 101.6 x 25.4 mm	13.125 in 333.4 mm	20ID/32OD	3114MP-BPE-0400X0100-PL-6
4 x 1.5 in 101.6 x 38.1 mm	11.125 in 282.6 mm	20ID/UNPOL OD	3114MP-BPE-0400X0150-PC-6
4 x 1.5 in 101.6 x 38.1 mm	11.125 in 282.6 mm	20ID/32OD	3114MP-BPE-0400X0150-PL-6
4 x 2 in 101.6 x 50.8 mm	9.125 in 231.8 mm	20ID/UNPOL OD	3114MP-BPE-0400X200-PC-6
4 x 2 in 101.6 x 50.8 mm	9.125 in 231.8 mm	20ID/32OD	3114MP-BPE-0400X200-PL-6
4 x 2.5 in 101.6 x 63.5 mm	7.125 in 181.0 mm	20ID/UNPOL OD	3114MP-BPE-0400X250-PC-6
4 x 2.5 in 101.6 x 63.5 mm	7.125 in 181.0 mm	20ID/32OD	3114MP-BPE-0400X250-PL-6
4 x 3 in 101.6 x 76.2 mm	5.125 in 130.2 mm	20ID/UNPOL OD	3114MP-BPE-0400X300-PC-6
4 x 3 in 101.6 x 76.2 mm	5.125 in 130.2 mm	20ID/32OD	3114MP-BPE-0400X300-PL-6



3214MP-BPE

Clamp Eccentric Reducer

Size	A	Surface Finish	316L Item Number
.75 x .5 in 19.0 x 12.7 mm	2.00 in 50.8 mm	20ID/UNPOL OD	3214MP-BPE-0075X0050-PC-6
.75 x .5 in 19.0 x 12.7 mm	2.00 in 50.8 mm	20ID/32OD	3214MP-BPE-0075X0050-PL-6
1 x .5 in 25.4 x 12.7 mm	2.50 in 63.5 mm	20ID/UNPOL OD	3214MP-BPE-0100X0050-PC-6
1 x .5 in 25.4 x 12.7 mm	2.50 in 63.5 mm	20ID/32OD	3214MP-BPE-0100X0050-PL-6
1 x .75 in 25.4 x 19.0 mm	2.00 in 50.8 mm	20ID/UNPOL OD	3214MP-BPE-0100X0075-PC-6
1 x .75 in 25.4 x 19.0 mm	2.00 in 50.8 mm	20ID/32OD	3214MP-BPE-0100X0075-PL-6
1.5 x .5 in 38.1 x 12.7 mm	3.50 in 88.9 mm	20ID/UNPOL OD	3214MP-BPE-0150X0050-PC-6
1.5 x .5 in 38.1 x 12.7 mm	3.50 in 88.9 mm	20ID/32OD	3214MP-BPE-0150X0050-PL-6
1.5 x .75 in 38.1 x 19.0 mm	3.00 in 76.2 mm	20ID/UNPOL OD	3214MP-BPE-0150X0075-PC-6
1.5 x .75 in 38.1 x 19.0 mm	3.00 in 76.2 mm	20ID/32OD	3214MP-BPE-0150X0075-PL-6
1.5 x 1 in 38.1 x 25.4 mm	3.00 in 76.2 mm	20ID/UNPOL OD	3214MP-BPE-0150X0100-PC-6
1.5 x 1 in 38.1 x 25.4 mm	3.00 in 76.2 mm	20ID/32OD	3214MP-BPE-0150X0100-PL-6
2 x .5 in 50.8 x 12.7 mm	5.50 in 139.7 mm	20ID/UNPOL OD	3214MP-BPE-0200X0050-PC-6
2 x .5 in 50.8 x 12.7 mm	5.50 in 139.7 mm	20ID/32OD	3214MP-BPE-0200X0050-PL-6
2 x .75 in 50.8 x 19.0 mm	5.00 in 127.0 mm	20ID/UNPOL OD	3214MP-BPE-0200X0075-PC-6
2 x .75 in 50.8 x 19.0 mm	5.00 in 127.0 mm	20ID/32OD	3214MP-BPE-0200X0075-PL-6
2 x 1 in 50.8 x 25.4 mm	5.00 in 127.0 mm	20ID/UNPOL OD	3214MP-BPE-0200X0100-PC-6
2 x 1 in 50.8 x 25.4 mm	5.00 in 127.0 mm	20ID/32OD	3214MP-BPE-0200X0100-PL-6
2 x 1.5 in 50.8 x 38.1 mm	3.00 in 76.2 mm	20ID/UNPOL OD	3214MP-BPE-0200X0150-PC-6
2 x 1.5 in 50.8 x 38.1 mm	3.00 in 76.2 mm	20ID/32OD	3214MP-BPE-0200X0150-PL-6
2.5 x .5 in 63.5 x 12.7 mm	7.50 in 190.5 mm	20ID/UNPOL OD	3214MP-BPE-0250X0050-PC-6
2.5 x .5 in 63.5 x 12.7 mm	7.50 in 190.5 mm	20ID/32OD	3214MP-BPE-0250X0050-PL-6

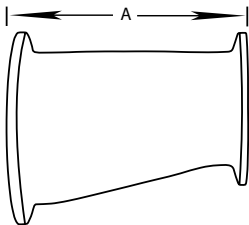


3214MP-BPE

Continued

Clamp Eccentric Reducer

Size	A	Surface Finish	316L Item Number
2.5 x .75 in 63.5 x 19.0 mm	7.00 in 177.8 mm	20ID/UNPOL OD	3214MP-BPE-0250X0075-PC-6
2.5 x .75 in 63.5 x 19.0 mm	7.00 in 177.8 mm	20ID/32OD	3214MP-BPE-0250X0075-PL-6
2.5 x 1 in 63.5 x 25.4 mm	7.00 in 177.8 mm	20ID/UNPOL OD	3214MP-BPE-0250X0100-PC-6
2.5 x 1 in 63.5 x 25.4 mm	7.00 in 177.8 mm	20ID/32OD	3214MP-BPE-0250X0100-PL-6
2.5 x 1.5 in 63.5 x 38.1 mm	5.00 in 127.0 mm	20ID/UNPOL OD	3214MP-BPE-0250X0150-PC-6
2.5 x 1.5 in 63.5 x 38.1 mm	5.00 in 127.0 mm	20ID/32OD	3214MP-BPE-0250X0150-PL-6
2.5 x 2 in 63.5 x 50.8 mm	3.00 in 76.2 mm	20ID/UNPOL OD	3214MP-BPE-0250X0200-PC-6
2.5 x 2 in 63.5 x 50.8 mm	3.00 in 76.2 mm	20ID/32OD	3214MP-BPE-0250X0200-PL-6
3 x 1 in 76.2 x 25.4 mm	9.00 in 228.6 mm	20ID/UNPOL OD	3214MP-BPE-0300X0100-PC-6
3 x 1 in 76.2 x 25.4 mm	9.00 in 228.6 mm	20ID/32OD	3214MP-BPE-0300X0100-PL-6
3 x 1.5 in 76.2 x 38.1 mm	7.00 in 177.8 mm	20ID/UNPOL OD	3214MP-BPE-0300X0150-PC-6
3 x 1.5 in 76.2 x 38.1 mm	7.00 in 177.8 mm	20ID/32OD	3214MP-BPE-0300X0150-PL-6
3 x 2 in 76.2 x 50.8 mm	5.00 in 127.0 mm	20ID/UNPOL OD	3214MP-BPE-0300X0200-PC-6
3 x 2 in 76.2 x 50.8 mm	5.00 in 127.0 mm	20ID/32OD	3214MP-BPE-0300X0200-PL-6
3 x 2.5 in 76.2 x 63.5 mm	3.00 in 76.2 mm	20ID/UNPOL OD	3214MP-BPE-0300X0250-PC-6
3 x 2.5 in 76.2 x 63.5 mm	3.00 in 76.2 mm	20ID/32OD	3214MP-BPE-0300X0250-PL-6
4 x 1 in 101.6 x 25.4 mm	13.125 in 333.4 mm	20ID/UNPOL OD	3214MP-BPE-0400X0100-PC-6
4 x 1 in 101.6 x 25.4 mm	13.125 in 333.4 mm	20ID/32OD	3214MP-BPE-0400X0100-PL-6
4 x 2 in 101.6 x 50.8 mm	9.125 in 231.8 mm	20ID/UNPOL OD	3214MP-BPE-0400X200-PC-6
4 x 2 in 101.6 x 50.8 mm	9.125 in 231.8 mm	20ID/32OD	3214MP-BPE-0400X200-PL-6
4 x 2.5 in 101.6 x 63.5 mm	7.125 in 181.0 mm	20ID/UNPOL OD	3214MP-BPE-0400X250-PC-6
4 x 2.5 in 101.6 x 63.5 mm	7.125 in 181.0 mm	20ID/32OD	3214MP-BPE-0400X250-PL-6
4 x 3 in 101.6 x 76.2 mm	5.125 in 130.2 mm	20ID/UNPOL OD	3214MP-BPE-0400X300-PC-6
4 x 3 in 101.6 x 76.2 mm	5.125 in 130.2 mm	20ID/32OD	3214MP-BPE-0400X300-PL-6



16AMP-BPE

Solid Clamp End Cap

Tube O.D.	A	Finish	316L Item Number
.75 in 19.0 mm	0.19 in 4.8 mm	20ID/32OD	16AMP-BPE-0075-PL-6
1.5 in 38.1 mm	0.25 in 6.4 mm	20ID/32OD	16AMP-BPE-0150-PL-6
2 in 50.8 mm	0.25 in 6.4 mm	20ID/32OD	16AMP-BPE-0200-PL-6
2.5 in 63.5 mm	0.25 in 6.4 mm	20ID/32OD	16AMP-BPE-0250-PL-6
3 in 76.2 mm	0.25 in 6.4 mm	20ID/32OD	16AMP-BPE-0300-PL-6
4 in 101.6 mm	0.312 in 7.9 mm	20ID/32OD	16AMP-BPE-0400-PL-6
6 in 152.4 mm	0.437 in 11.1 mm	20ID/32OD	16AMP-BPE-0600-PL-6

