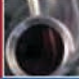








Precision Stainless, Inc.

STANDARD AND CUSTOM STAINLESS STEEL TUBE FITTINGS

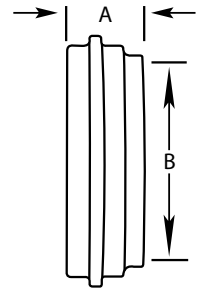
JOHN PERRY FITTINGS

CONTENTS		Bevel Seat Fittings
		BPE Fittings
		Clamp Fittings
		I-Line Fittings
		John Perry Fittings
		Sanitary Butt weld Fittings
		Tube O.D. Fittings

14PRFJP

John Perry Plain Short Weld Ferrule

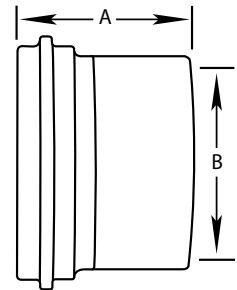
304 Item Number	Tube O.D.	A	B	316L Item Number
14PRFJP-0100-4	1	0.687	0.870	14PRFJP-0100-6
14PRFJP-0150-4	1.5	0.719	1.370	14PRFJP-0150-6
14PRFJP-0200-4	2	0.719	1.870	14PRFJP-0200-6
14PRFJP-0250-4	2.5	0.844	2.370	14PRFJP-0250-6
14PRFJP-0300-4	3	0.906	2.870	14PRFJP-0300-6
14PRFJP-0400-4	4	1.218	3.834	14PRFJP-0400-6



14AJP

John Perry Plain Long Weld Ferrule

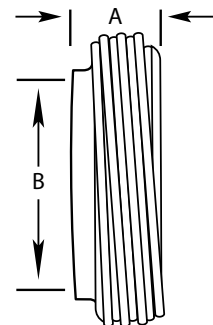
304 Item Number	Tube O.D.	A	B	316L Item Number
14AJP-0100-4	1	1.375	0.870	14AJP-0100-6
14AJP-0150-4	1.5	1.500	1.370	14AJP-0150-6
14AJP-0200-4	2	1.500	1.870	14AJP-0200-6
14AJP-0250-4	2.5	1.750	2.370	14AJP-0250-6
14AJP-0300-4	3	1.750	2.870	14AJP-0300-6
14AJP-0400-4	4	1.750	3.834	14AJP-0400-6

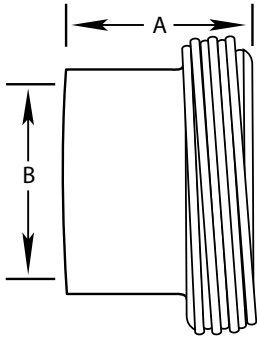


15TRFJP

John Perry Threaded Short Weld Ferrule

304 Item Number	Tube O.D.	A	B	316L Item Number
15TRFJP-0100-4	1	0.687	0.870	15TRFJP-0100-6
15TRFJP-0150-4	1.5	0.719	1.370	15TRFJP-0150-6
15TRFJP-0200-4	2	0.719	1.870	15TRFJP-0200-6
15TRFJP-0250-4	2.5	0.844	2.370	15TRFJP-0250-6
15TRFJP-0300-4	3	0.906	2.870	15TRFJP-0300-6
15TRFJP-0400-4	4	1.218	3.834	15TRFJP-0400-6

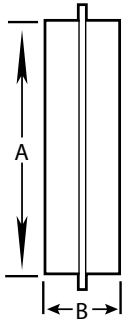




15AJP

John Perry Threaded Long Weld Ferrule

304 Item Number	Tube O.D.	A	B	316L Item Number
15AJP-0100-4	1	1.375	0.870	15AJP-0100-6
15AJP-0150-4	1.5	1.500	1.370	15AJP-0150-6
15AJP-0200-4	2	1.500	1.870	15AJP-0200-6
15AJP-0250-4	2.5	1.750	2.370	15AJP-0250-6
15AJP-0300-4	3	1.750	2.870	15AJP-0300-6
15AJP-0400-4	4	1.750	3.834	15AJP-0400-6



16AJP

John Perry Solid End Cap

304 Item Number	Tube O.D.	A	B	316L Item Number
16AJP-0100-4	1	1.125	.468	16AJP-0100-6
16AJP-0150-4	1.5	1.656	.500	16AJP-0150-6
16AJP-0200-4	2	2.187	.531	16AJP-0200-6
16AJP-0250-4	2.5	2.656	.594	16AJP-0250-6
16AJP-0300-4	3	3.187	.625	16AJP-0300-6
16AJP-0400-4	4	4.187	.625	16AJP-0400-6